

For Project: Broadmarston
 Project Notes:
 Location/Name: Incoming
 Report Generated: 01/11/2025 10:39:33
 Speed Intervals: 5 MPH
 Time Intervals: Instant
 Traffic Report From: 01/10/2025 00:00:00 through 18/10/2025 10:59:59
 85th Percentile Speed: 33 MPH
 85th Percentile Vehicles: 4766
 Max Speed: 50 MPH on 07/10/2025 17:15:00
 Total Vehicles: 5607
 AADT: 321

Volumes - weekly counts

Time	5 Day	7 Day
Average Daily	346	309
AM Peak 07:00	29	23
PM Peak 14:00	38	33

Speed

Speed Limit: 30
 85th Percentile Speed: 33
 50th Percentile Speed: 27.7
 10 MPH Pace Interval: 25.0 MPH to 35.0 MPH
 Average Speed: 27.31

	Monday	Tuesday	Wednesday	Thursday	Friday	Saturday	Sunday
Count over limit	217	192	296	321	335	166	161
% over limit	33.7	27.7	28.2	30.3	30.9	27.6	34.0
Avg Speeder	33.5	33.5	33.4	33.4	33.5	33.7	33.3
Avg Speed	20.7	19.0	19.3	19.9	19.2	21.4	20.5

Incoming Summary
Broadmarston

from Wed-Oct-01-2025-12-00-AM to Sat-Oct-18-2025-10-59-AM

Day/Time Ending	85th pctl (MPH)	85th pctl cnts	Total Cnts	Max Speed	Avg Speeder	% Speeders	Avg Speed
01/10/2025 01:00:00	35.0	1	1	35	32.5	100.0%	32.0
01/10/2025 02:00:00	0.0	0	0	0	0.0	0.0%	0.0
01/10/2025 03:00:00	30.0	1	1	30	0.0	0.0%	27.0
01/10/2025 04:00:00	45.0	1	1	45	42.5	100.0%	42.0
01/10/2025 05:00:00	45.0	3	3	45	42.5	33.3%	32.3
01/10/2025 06:00:00	28.8	4	5	30	0.0	0.0%	26.2
01/10/2025 07:00:00	30.0	10	12	40	35.0	16.7%	27.3
01/10/2025 08:00:00	33.5	26	30	40	33.0	36.7%	27.7
01/10/2025 09:00:00	32.5	19	22	40	33.5	22.7%	27.7
01/10/2025 10:00:00	34.3	21	25	40	34.0	40.0%	28.4
01/10/2025 11:00:00	33.0	12	14	35	32.5	35.7%	27.7
01/10/2025 12:00:00	32.5	19	22	35	32.5	27.3%	27.4
01/10/2025 13:00:00	32.5	22	26	40	33.2	26.9%	27.3
01/10/2025 14:00:00	32.5	20	24	40	33.2	29.2%	27.5
01/10/2025 15:00:00	31.9	31	37	40	33.1	24.3%	26.8
01/10/2025 16:00:00	31.8	37	44	35	32.5	25.0%	25.9
01/10/2025 17:00:00	33.3	18	21	35	32.5	42.9%	28.6
01/10/2025 18:00:00	33.6	12	14	35	32.5	50.0%	28.9
01/10/2025 19:00:00	30.0	14	16	35	32.5	12.5%	25.3
01/10/2025 20:00:00	40.0	7	8	45	36.5	62.5%	32.6
01/10/2025 21:00:00	32.5	3	4	35	32.5	50.0%	28.3
01/10/2025 22:00:00	40.0	3	3	40	35.0	66.7%	32.0
01/10/2025 23:00:00	30.0	3	4	40	37.5	25.0%	27.3
02/10/2025 00:00:00	35.0	2	2	35	32.5	100.0%	32.0
02/10/2025 01:00:00	0.0	0	0	0	0.0	0.0%	0.0
02/10/2025 02:00:00	32.5	3	4	35	32.5	50.0%	28.5
02/10/2025 03:00:00	40.0	3	3	40	35.0	66.7%	32.0
02/10/2025 04:00:00	0.0	0	0	0	0.0	0.0%	0.0
02/10/2025 05:00:00	30.0	1	1	30	0.0	0.0%	27.0
02/10/2025 06:00:00	35.0	3	3	35	32.5	33.3%	22.0
02/10/2025 07:00:00	35.0	10	12	40	34.2	50.0%	28.4
02/10/2025 08:00:00	32.1	28	33	40	33.1	24.2%	25.4
02/10/2025 09:00:00	29.4	14	17	40	35.0	11.8%	25.1
02/10/2025 10:00:00	29.5	14	16	35	32.5	6.3%	25.9
02/10/2025 11:00:00	33.3	18	21	35	32.5	42.9%	26.1
02/10/2025 12:00:00	32.5	20	24	40	33.2	29.2%	25.1
02/10/2025 13:00:00	30.0	17	20	40	37.5	15.0%	27.3
02/10/2025 14:00:00	32.0	19	22	35	32.5	22.7%	26.6
02/10/2025 15:00:00	33.4	28	33	35	32.5	48.5%	28.3
02/10/2025 16:00:00	33.0	35	41	40	33.3	29.3%	27.3
02/10/2025 17:00:00	32.5	29	34	40	33.1	26.5%	26.7
02/10/2025 18:00:00	33.6	14	17	45	33.8	47.1%	29.5
02/10/2025 19:00:00	33.6	18	21	45	33.8	38.1%	27.2
02/10/2025 20:00:00	33.3	9	11	40	33.8	36.4%	29.0
02/10/2025 21:00:00	30.0	3	3	30	0.0	0.0%	25.3
02/10/2025 22:00:00	33.3	8	10	35	32.5	60.0%	30.2
02/10/2025 23:00:00	0.0	0	0	0	0.0	0.0%	0.0

Incoming Summary
Broadmarston

from Wed-Oct-01-2025-12-00-AM to Sat-Oct-18-2025-10-59-AM

03/10/2025 00:00:00	30.0	1	1	30	0.0	0.0%	27.0
03/10/2025 01:00:00	30.0	1	1	30	0.0	0.0%	27.0
03/10/2025 02:00:00	35.0	2	2	35	32.5	100.0%	32.5
03/10/2025 03:00:00	35.0	1	1	35	32.5	100.0%	32.0
03/10/2025 04:00:00	0.0	0	0	0	0.0	0.0%	0.0
03/10/2025 05:00:00	10.0	1	1	10	0.0	0.0%	7.0
03/10/2025 06:00:00	32.5	5	6	35	32.5	33.3%	24.0
03/10/2025 07:00:00	31.7	12	14	35	32.5	21.4%	24.8
03/10/2025 08:00:00	33.0	25	29	35	32.5	34.5%	28.5
03/10/2025 09:00:00	33.6	20	23	40	33.1	34.8%	28.1
03/10/2025 10:00:00	34.2	12	14	40	33.2	50.0%	29.6
03/10/2025 11:00:00	31.7	9	11	35	32.5	27.3%	26.6
03/10/2025 12:00:00	31.2	16	19	35	32.5	21.1%	26.4
03/10/2025 13:00:00	33.0	23	27	40	33.9	25.9%	27.6
03/10/2025 14:00:00	32.9	23	27	40	33.1	29.6%	28.0
03/10/2025 15:00:00	32.9	25	29	40	33.1	27.6%	27.2
03/10/2025 16:00:00	33.5	26	31	40	33.3	38.7%	28.1
03/10/2025 17:00:00	30.0	20	24	35	32.5	16.7%	25.3
03/10/2025 18:00:00	35.0	19	22	40	34.2	40.9%	29.1
03/10/2025 19:00:00	29.3	12	14	35	32.5	7.1%	25.4
03/10/2025 20:00:00	30.0	4	5	35	32.5	20.0%	27.0
03/10/2025 21:00:00	30.0	4	5	35	32.5	20.0%	23.2
03/10/2025 22:00:00	30.0	6	7	35	32.5	14.3%	25.6
03/10/2025 23:00:00	35.0	2	2	35	32.5	50.0%	29.5
04/10/2025 00:00:00	28.3	3	4	30	0.0	0.0%	25.8
04/10/2025 01:00:00	0.0	0	0	0	0.0	0.0%	0.0
04/10/2025 02:00:00	30.0	1	1	30	0.0	0.0%	27.0
04/10/2025 03:00:00	30.0	2	2	30	0.0	0.0%	27.0
04/10/2025 04:00:00	0.0	0	0	0	0.0	0.0%	0.0
04/10/2025 05:00:00	0.0	0	0	0	0.0	0.0%	0.0
04/10/2025 06:00:00	30.0	3	4	35	32.5	25.0%	23.5
04/10/2025 07:00:00	34.0	7	8	35	32.5	62.5%	28.3
04/10/2025 08:00:00	32.5	12	14	35	32.5	28.6%	27.9
04/10/2025 09:00:00	32.5	13	15	35	32.5	26.7%	27.1
04/10/2025 10:00:00	34.0	17	20	40	33.9	35.0%	27.8
04/10/2025 11:00:00	29.7	25	29	35	32.5	10.3%	24.8
04/10/2025 12:00:00	34.2	14	16	40	33.2	43.8%	29.4
04/10/2025 13:00:00	32.5	16	19	35	32.5	31.6%	26.4
04/10/2025 14:00:00	31.0	23	27	35	32.5	18.5%	25.9
04/10/2025 15:00:00	33.8	12	14	40	33.5	35.7%	28.2
04/10/2025 16:00:00	30.0	17	20	45	35.8	15.0%	25.5
04/10/2025 17:00:00	32.8	28	33	40	33.0	30.3%	27.7
04/10/2025 18:00:00	32.5	15	18	40	35.0	22.2%	26.7
04/10/2025 19:00:00	36.7	8	10	40	36.3	40.0%	28.5
04/10/2025 20:00:00	32.5	4	5	35	32.5	40.0%	26.0
04/10/2025 21:00:00	35.0	3	4	40	35.0	50.0%	31.0
04/10/2025 22:00:00	30.0	3	4	35	32.5	25.0%	26.0
04/10/2025 23:00:00	35.0	1	1	35	32.5	100.0%	32.0

Incoming Summary
Broadmarston

from Wed-Oct-01-2025-12-00-AM to Sat-Oct-18-2025-10-59-AM

05/10/2025 00:00:00	0.0	0	0	0	0.0	0.0%	0.0
05/10/2025 01:00:00	30.0	3	3	30	0.0	0.0%	25.3
05/10/2025 02:00:00	30.0	2	2	30	0.0	0.0%	24.5
05/10/2025 03:00:00	35.0	1	1	35	32.5	100.0%	32.0
05/10/2025 04:00:00	0.0	0	0	0	0.0	0.0%	0.0
05/10/2025 05:00:00	15.0	1	1	15	0.0	0.0%	12.0
05/10/2025 06:00:00	35.0	3	3	35	32.5	66.7%	30.3
05/10/2025 07:00:00	40.0	2	2	40	37.5	50.0%	32.0
05/10/2025 08:00:00	30.0	5	6	35	32.5	16.7%	25.5
05/10/2025 09:00:00	32.0	16	19	35	32.5	26.3%	24.3
05/10/2025 10:00:00	32.5	20	24	35	32.5	33.3%	26.4
05/10/2025 11:00:00	35.0	12	14	40	33.8	57.1%	28.1
05/10/2025 12:00:00	32.9	18	21	35	32.5	33.3%	26.2
05/10/2025 13:00:00	31.2	22	26	40	33.5	19.2%	26.9
05/10/2025 14:00:00	32.0	14	17	35	32.5	29.4%	27.9
05/10/2025 15:00:00	33.8	24	28	45	34.0	35.7%	27.3
05/10/2025 16:00:00	32.5	16	19	35	32.5	31.6%	26.3
05/10/2025 17:00:00	34.2	10	12	40	33.2	58.3%	30.4
05/10/2025 18:00:00	33.8	6	7	35	32.5	57.1%	30.0
05/10/2025 19:00:00	30.0	8	10	35	32.5	20.0%	26.1
05/10/2025 20:00:00	35.0	4	5	40	34.2	60.0%	31.2
05/10/2025 21:00:00	35.0	1	1	35	32.5	100.0%	32.0
05/10/2025 22:00:00	45.0	1	1	45	42.5	100.0%	42.0
05/10/2025 23:00:00	0.0	0	0	0	0.0	0.0%	0.0
06/10/2025 00:00:00	35.0	2	2	35	32.5	50.0%	27.0
06/10/2025 01:00:00	40.0	3	3	40	35.0	66.7%	32.0
06/10/2025 02:00:00	25.0	1	1	25	0.0	0.0%	22.0
06/10/2025 03:00:00	25.0	1	1	25	0.0	0.0%	22.0
06/10/2025 04:00:00	0.0	0	0	0	0.0	0.0%	0.0
06/10/2025 05:00:00	10.0	1	1	10	0.0	0.0%	7.0
06/10/2025 06:00:00	33.3	7	8	35	32.5	37.5%	24.6
06/10/2025 07:00:00	31.7	19	22	40	33.8	18.2%	25.9
06/10/2025 08:00:00	34.6	31	36	40	33.8	44.4%	28.8
06/10/2025 09:00:00	35.0	15	18	40	35.0	33.3%	27.7
06/10/2025 10:00:00	31.7	14	17	40	33.8	23.5%	26.9
06/10/2025 11:00:00	33.3	17	20	40	33.2	35.0%	28.5
06/10/2025 12:00:00	31.2	14	17	35	32.5	23.5%	26.9
06/10/2025 13:00:00	31.7	15	18	40	33.8	22.2%	26.6
06/10/2025 14:00:00	33.3	24	28	40	33.0	35.7%	26.9
06/10/2025 15:00:00	33.1	26	30	40	33.1	30.0%	27.1
06/10/2025 16:00:00	34.3	28	33	40	33.3	54.5%	28.4
06/10/2025 17:00:00	33.8	38	45	40	33.3	42.2%	28.7
06/10/2025 18:00:00	32.0	15	18	35	32.5	27.8%	27.2
06/10/2025 19:00:00	34.0	13	15	40	33.3	40.0%	28.1
06/10/2025 20:00:00	35.0	8	9	40	35.0	22.2%	28.1
06/10/2025 21:00:00	35.0	6	7	40	33.8	57.1%	30.6
06/10/2025 22:00:00	35.0	6	7	40	35.0	28.6%	27.0
06/10/2025 23:00:00	40.0	2	2	40	37.5	50.0%	29.5

Incoming Summary
Broadmarston

from Wed-Oct-01-2025-12-00-AM to Sat-Oct-18-2025-10-59-AM

07/10/2025 00:00:00	35.0	1	1	35	32.5	100.0%	32.0
07/10/2025 01:00:00	35.0	2	2	35	32.5	50.0%	29.5
07/10/2025 02:00:00	45.0	1	1	45	42.5	100.0%	42.0
07/10/2025 03:00:00	35.0	1	1	35	32.5	100.0%	32.0
07/10/2025 04:00:00	0.0	0	0	0	0.0	0.0%	0.0
07/10/2025 05:00:00	30.0	2	2	30	0.0	0.0%	17.0
07/10/2025 06:00:00	35.0	3	3	35	32.5	33.3%	25.3
07/10/2025 07:00:00	34.2	11	13	40	33.2	53.8%	29.7
07/10/2025 08:00:00	32.9	20	24	40	33.1	33.3%	28.2
07/10/2025 09:00:00	30.0	17	20	40	34.2	15.0%	25.4
07/10/2025 10:00:00	32.5	16	19	40	33.5	26.3%	26.8
07/10/2025 11:00:00	29.0	16	19	35	32.5	10.5%	20.6
07/10/2025 12:00:00	27.1	21	25	30	0.0	0.0%	20.0
07/10/2025 13:00:00	28.6	15	18	35	32.5	5.6%	21.1
07/10/2025 14:00:00	30.0	23	27	35	32.5	14.8%	24.4
07/10/2025 15:00:00	31.8	37	44	35	32.5	25.0%	26.2
07/10/2025 16:00:00	32.5	38	45	40	32.9	28.9%	27.2
07/10/2025 17:00:00	33.9	23	27	40	33.4	40.7%	27.8
07/10/2025 18:00:00	33.8	21	25	50	36.1	28.0%	27.2
07/10/2025 19:00:00	35.0	10	12	45	35.5	41.7%	28.4
07/10/2025 20:00:00	29.2	6	7	30	0.0	0.0%	26.3
07/10/2025 21:00:00	35.0	2	2	35	32.5	50.0%	24.5
07/10/2025 22:00:00	33.3	4	5	35	32.5	60.0%	29.0
07/10/2025 23:00:00	40.0	2	2	40	37.5	50.0%	32.0
08/10/2025 00:00:00	0.0	0	0	0	0.0	0.0%	0.0
08/10/2025 01:00:00	0.0	0	0	0	0.0	0.0%	0.0
08/10/2025 02:00:00	0.0	0	0	0	0.0	0.0%	0.0
08/10/2025 03:00:00	30.0	1	1	30	0.0	0.0%	27.0
08/10/2025 04:00:00	0.0	0	0	0	0.0	0.0%	0.0
08/10/2025 05:00:00	40.0	2	2	40	37.5	50.0%	29.5
08/10/2025 06:00:00	30.0	3	3	30	0.0	0.0%	27.0
08/10/2025 07:00:00	33.3	12	14	40	33.8	28.6%	27.1
08/10/2025 08:00:00	33.1	23	27	40	33.1	33.3%	28.8
08/10/2025 09:00:00	32.9	21	25	40	33.1	32.0%	26.8
08/10/2025 10:00:00	29.7	20	24	35	32.5	12.5%	26.2
08/10/2025 11:00:00	32.9	21	25	40	33.1	32.0%	26.7
08/10/2025 12:00:00	29.5	17	20	40	35.0	10.0%	24.9
08/10/2025 13:00:00	31.7	13	15	35	32.5	20.0%	25.5
08/10/2025 14:00:00	32.5	21	25	40	33.2	28.0%	27.0
08/10/2025 15:00:00	32.8	31	36	40	33.0	27.8%	26.6
08/10/2025 16:00:00	32.9	39	46	40	32.8	32.6%	27.1
08/10/2025 17:00:00	32.5	23	27	40	34.2	22.2%	27.2
08/10/2025 18:00:00	33.6	17	20	40	33.1	40.0%	25.5
08/10/2025 19:00:00	36.7	13	15	40	34.6	46.7%	29.1
08/10/2025 20:00:00	25.0	4	5	30	0.0	0.0%	19.2
08/10/2025 21:00:00	30.0	3	4	35	32.5	25.0%	25.8
08/10/2025 22:00:00	35.0	3	3	35	32.5	33.3%	28.7
08/10/2025 23:00:00	30.0	1	1	30	0.0	0.0%	27.0

Incoming Summary
Broadmarston

from Wed-Oct-01-2025-12-00-AM to Sat-Oct-18-2025-10-59-AM

09/10/2025 00:00:00	35.0	2	2	35	32.5	50.0%	29.5
09/10/2025 01:00:00	35.0	1	1	35	32.5	100.0%	32.0
09/10/2025 02:00:00	0.0	0	0	0	0.0	0.0%	0.0
09/10/2025 03:00:00	30.0	2	2	30	0.0	0.0%	24.5
09/10/2025 04:00:00	0.0	0	0	0	0.0	0.0%	0.0
09/10/2025 05:00:00	30.0	2	2	30	0.0	0.0%	24.5
09/10/2025 06:00:00	30.0	10	12	40	35.0	16.7%	23.5
09/10/2025 07:00:00	33.3	10	12	40	33.8	33.3%	23.0
09/10/2025 08:00:00	33.3	29	34	40	32.9	38.2%	28.5
09/10/2025 09:00:00	33.0	18	21	40	33.3	28.6%	26.7
09/10/2025 10:00:00	31.2	14	17	35	32.5	23.5%	25.8
09/10/2025 11:00:00	29.1	28	33	40	34.2	9.1%	22.8
09/10/2025 12:00:00	35.0	16	19	40	34.6	36.8%	27.9
09/10/2025 13:00:00	32.9	18	21	35	32.5	33.3%	27.9
09/10/2025 14:00:00	33.5	21	25	40	33.0	44.0%	28.7
09/10/2025 15:00:00	32.3	31	37	35	32.5	29.7%	26.4
09/10/2025 16:00:00	33.1	34	40	40	32.9	35.0%	27.6
09/10/2025 17:00:00	32.9	31	37	40	34.0	27.0%	27.1
09/10/2025 18:00:00	35.0	17	20	40	34.2	45.0%	30.0
09/10/2025 19:00:00	35.0	8	9	45	37.5	22.2%	28.8
09/10/2025 20:00:00	37.5	7	8	40	35.0	50.0%	30.3
09/10/2025 21:00:00	32.5	4	5	35	32.5	40.0%	28.0
09/10/2025 22:00:00	30.0	6	7	35	32.5	14.3%	27.1
09/10/2025 23:00:00	30.0	2	2	30	0.0	0.0%	27.0
10/10/2025 00:00:00	35.0	3	4	40	35.0	50.0%	30.8
10/10/2025 01:00:00	35.0	1	1	35	32.5	100.0%	32.0
10/10/2025 02:00:00	0.0	0	0	0	0.0	0.0%	0.0
10/10/2025 03:00:00	30.0	2	2	30	0.0	0.0%	27.0
10/10/2025 04:00:00	0.0	0	0	0	0.0	0.0%	0.0
10/10/2025 05:00:00	0.0	0	0	0	0.0	0.0%	0.0
10/10/2025 06:00:00	28.3	3	4	30	0.0	0.0%	24.5
10/10/2025 07:00:00	35.0	9	11	40	34.5	45.5%	28.9
10/10/2025 08:00:00	33.9	29	34	40	33.1	47.1%	28.9
10/10/2025 09:00:00	33.8	17	20	40	34.2	30.0%	28.0
10/10/2025 10:00:00	31.7	14	17	40	33.8	23.5%	27.8
10/10/2025 11:00:00	30.0	25	29	35	32.5	13.8%	25.0
10/10/2025 12:00:00	33.0	20	24	35	32.5	41.7%	27.5
10/10/2025 13:00:00	34.4	22	26	40	33.9	42.3%	28.3
10/10/2025 14:00:00	32.2	27	32	35	32.5	28.1%	28.3
10/10/2025 15:00:00	31.7	43	51	40	33.4	21.6%	26.1
10/10/2025 16:00:00	32.3	35	41	35	32.5	26.8%	26.8
10/10/2025 17:00:00	33.3	33	39	40	34.5	25.6%	26.5
10/10/2025 18:00:00	32.5	22	26	40	33.2	26.9%	24.7
10/10/2025 19:00:00	29.6	18	21	35	32.5	9.5%	26.0
10/10/2025 20:00:00	32.5	6	7	35	32.5	28.6%	25.0
10/10/2025 21:00:00	37.5	6	7	40	35.0	57.1%	30.7
10/10/2025 22:00:00	35.0	8	9	40	34.2	33.3%	26.6
10/10/2025 23:00:00	35.0	4	5	40	34.2	60.0%	29.0

Incoming Summary
Broadmarston

from Wed-Oct-01-2025-12-00-AM to Sat-Oct-18-2025-10-59-AM

11/10/2025 00:00:00	35.0	2	2	35	32.5	100.0%	32.0
11/10/2025 01:00:00	0.0	0	0	0	0.0	0.0%	0.0
11/10/2025 02:00:00	50.0	1	1	50	47.5	100.0%	47.0
11/10/2025 03:00:00	35.0	1	1	35	32.5	100.0%	32.0
11/10/2025 04:00:00	0.0	0	0	0	0.0	0.0%	0.0
11/10/2025 05:00:00	0.0	0	0	0	0.0	0.0%	0.0
11/10/2025 06:00:00	40.0	2	2	40	37.5	50.0%	32.0
11/10/2025 07:00:00	35.0	2	2	35	32.5	50.0%	29.5
11/10/2025 08:00:00	33.3	8	10	40	33.8	40.0%	28.5
11/10/2025 09:00:00	34.3	18	21	40	33.6	42.9%	28.2
11/10/2025 10:00:00	33.3	14	16	40	33.8	25.0%	25.8
11/10/2025 11:00:00	30.0	20	24	35	32.5	16.7%	24.6
11/10/2025 12:00:00	31.2	26	30	45	34.5	16.7%	26.4
11/10/2025 13:00:00	32.0	25	29	40	33.3	20.7%	25.5
11/10/2025 14:00:00	32.5	13	15	40	34.2	20.0%	27.1
11/10/2025 15:00:00	37.5	17	20	45	36.3	40.0%	28.9
11/10/2025 16:00:00	30.0	15	18	35	32.5	16.7%	25.6
11/10/2025 17:00:00	30.8	27	32	35	32.5	18.8%	26.8
11/10/2025 18:00:00	33.6	19	22	40	33.1	36.4%	28.8
11/10/2025 19:00:00	31.7	11	13	35	32.5	23.1%	26.7
11/10/2025 20:00:00	30.0	7	8	40	37.5	12.5%	24.8
11/10/2025 21:00:00	35.0	2	2	35	32.5	50.0%	29.5
11/10/2025 22:00:00	30.0	3	4	35	32.5	25.0%	27.0
11/10/2025 23:00:00	40.0	2	2	40	37.5	100.0%	37.0
12/10/2025 00:00:00	35.0	3	4	40	35.0	50.0%	30.8
12/10/2025 01:00:00	30.0	1	1	30	0.0	0.0%	27.0
12/10/2025 02:00:00	0.0	0	0	0	0.0	0.0%	0.0
12/10/2025 03:00:00	35.0	2	2	35	32.5	50.0%	29.5
12/10/2025 04:00:00	30.0	1	1	30	0.0	0.0%	27.0
12/10/2025 05:00:00	15.0	1	1	15	0.0	0.0%	12.0
12/10/2025 06:00:00	25.0	1	1	25	0.0	0.0%	22.0
12/10/2025 07:00:00	40.0	2	2	40	37.5	50.0%	29.5
12/10/2025 08:00:00	33.8	9	11	40	33.5	45.5%	28.1
12/10/2025 09:00:00	28.3	11	13	35	32.5	7.7%	19.9
12/10/2025 10:00:00	34.4	17	20	40	33.5	50.0%	27.2
12/10/2025 11:00:00	33.1	18	21	35	32.5	38.1%	28.0
12/10/2025 12:00:00	33.1	17	20	35	32.5	40.0%	27.5
12/10/2025 13:00:00	30.8	32	38	40	33.2	18.4%	25.8
12/10/2025 14:00:00	31.2	14	17	35	32.5	23.5%	28.4
12/10/2025 15:00:00	32.5	14	16	35	32.5	25.0%	25.8
12/10/2025 16:00:00	33.0	19	22	40	33.3	27.3%	25.4
12/10/2025 17:00:00	34.2	15	18	40	33.8	44.4%	28.6
12/10/2025 18:00:00	33.6	17	20	40	33.1	40.0%	28.7
12/10/2025 19:00:00	35.0	9	11	40	35.0	36.4%	28.1
12/10/2025 20:00:00	35.0	3	3	35	32.5	66.7%	28.7
12/10/2025 21:00:00	35.0	3	3	35	32.5	33.3%	29.0
12/10/2025 22:00:00	35.0	3	3	35	32.5	33.3%	28.7
12/10/2025 23:00:00	45.0	3	3	45	37.5	66.7%	32.0

Incoming Summary
Broadmarston

from Wed-Oct-01-2025-12-00-AM to Sat-Oct-18-2025-10-59-AM

13/10/2025 00:00:00	45.0	2	2	45	37.5	100.0%	37.0
13/10/2025 01:00:00	30.0	1	1	30	0.0	0.0%	27.0
13/10/2025 02:00:00	0.0	0	0	0	0.0	0.0%	0.0
13/10/2025 03:00:00	0.0	0	0	0	0.0	0.0%	0.0
13/10/2025 04:00:00	0.0	0	0	0	0.0	0.0%	0.0
13/10/2025 05:00:00	0.0	0	0	0	0.0	0.0%	0.0
13/10/2025 06:00:00	35.0	2	2	35	32.5	50.0%	27.0
13/10/2025 07:00:00	30.0	9	11	35	32.5	18.2%	26.8
13/10/2025 08:00:00	35.0	20	23	40	33.9	47.8%	29.8
13/10/2025 09:00:00	32.0	16	19	35	32.5	26.3%	26.9
13/10/2025 10:00:00	30.0	18	21	40	34.2	14.3%	23.9
13/10/2025 11:00:00	34.0	14	17	40	33.9	41.2%	27.4
13/10/2025 12:00:00	33.3	17	20	40	34.5	25.0%	26.7
13/10/2025 13:00:00	29.4	16	19	35	32.5	10.5%	23.2
13/10/2025 14:00:00	34.3	17	20	40	33.6	45.0%	28.9
13/10/2025 15:00:00	33.2	31	37	40	33.3	35.1%	28.1
13/10/2025 16:00:00	31.2	22	26	40	33.5	19.2%	27.4
13/10/2025 17:00:00	35.0	20	24	40	34.7	37.5%	28.9
13/10/2025 18:00:00	28.8	14	17	35	32.5	5.9%	24.3
13/10/2025 19:00:00	35.0	6	7	40	33.8	57.1%	29.9
13/10/2025 20:00:00	32.5	6	7	35	32.5	28.6%	27.0
13/10/2025 21:00:00	30.0	3	4	35	32.5	25.0%	27.0
13/10/2025 22:00:00	37.5	8	9	40	33.9	77.8%	31.6
13/10/2025 23:00:00	35.0	3	3	35	32.5	100.0%	32.3
14/10/2025 00:00:00	0.0	0	0	0	0.0	0.0%	0.0
14/10/2025 01:00:00	0.0	0	0	0	0.0	0.0%	0.0
14/10/2025 02:00:00	0.0	0	0	0	0.0	0.0%	0.0
14/10/2025 03:00:00	30.0	2	2	30	0.0	0.0%	27.5
14/10/2025 04:00:00	25.0	1	1	25	0.0	0.0%	22.0
14/10/2025 05:00:00	28.3	3	4	30	0.0	0.0%	22.3
14/10/2025 06:00:00	28.3	4	5	30	0.0	0.0%	24.0
14/10/2025 07:00:00	33.1	14	17	35	32.5	47.1%	28.2
14/10/2025 08:00:00	33.1	22	26	40	33.1	34.6%	27.6
14/10/2025 09:00:00	30.0	26	31	40	33.5	16.1%	26.5
14/10/2025 10:00:00	29.6	18	21	35	32.5	9.5%	26.1
14/10/2025 11:00:00	29.5	11	13	40	37.5	7.7%	27.2
14/10/2025 12:00:00	31.2	23	27	40	33.5	18.5%	24.4
14/10/2025 13:00:00	34.4	15	18	40	33.5	55.6%	29.8
14/10/2025 14:00:00	35.0	23	27	45	35.5	37.0%	27.3
14/10/2025 15:00:00	32.7	38	45	35	32.5	33.3%	27.4
14/10/2025 16:00:00	32.9	27	32	40	33.6	28.1%	27.5
14/10/2025 17:00:00	33.8	26	30	40	33.5	33.3%	28.1
14/10/2025 18:00:00	33.3	15	18	40	33.2	38.9%	28.6
14/10/2025 19:00:00	32.5	11	13	35	32.5	30.8%	26.4
14/10/2025 20:00:00	40.0	8	9	45	35.5	55.6%	31.0
14/10/2025 21:00:00	35.0	3	3	35	32.5	33.3%	27.0
14/10/2025 22:00:00	33.3	4	5	35	32.5	60.0%	30.2
14/10/2025 23:00:00	32.5	3	4	35	32.5	50.0%	29.5

Incoming Summary
Broadmarston

from Wed-Oct-01-2025-12-00-AM to Sat-Oct-18-2025-10-59-AM

15/10/2025 00:00:00	0.0	0	0	0	0.0	0.0%	0.0
15/10/2025 01:00:00	0.0	0	0	0	0.0	0.0%	0.0
15/10/2025 02:00:00	0.0	0	0	0	0.0	0.0%	0.0
15/10/2025 03:00:00	35.0	1	1	35	32.5	100.0%	32.0
15/10/2025 04:00:00	40.0	1	1	40	37.5	100.0%	37.0
15/10/2025 05:00:00	45.0	2	2	45	42.5	50.0%	24.5
15/10/2025 06:00:00	32.5	3	4	35	32.5	50.0%	29.5
15/10/2025 07:00:00	32.0	16	19	35	32.5	26.3%	26.5
15/10/2025 08:00:00	31.2	25	29	40	33.5	17.2%	27.3
15/10/2025 09:00:00	31.0	31	36	40	33.3	16.7%	25.9
15/10/2025 10:00:00	32.5	13	15	45	35.8	20.0%	20.8
15/10/2025 11:00:00	32.0	16	19	35	32.5	26.3%	27.0
15/10/2025 12:00:00	29.6	25	29	45	35.8	10.3%	23.2
15/10/2025 13:00:00	32.5	17	20	40	33.5	25.0%	26.6
15/10/2025 14:00:00	31.9	28	33	35	32.5	24.2%	25.2
15/10/2025 15:00:00	32.3	40	47	40	32.9	25.5%	27.1
15/10/2025 16:00:00	33.6	29	34	45	34.5	29.4%	27.6
15/10/2025 17:00:00	35.0	21	25	40	34.5	40.0%	27.6
15/10/2025 18:00:00	32.9	23	27	40	33.1	29.6%	26.9
15/10/2025 19:00:00	33.3	10	12	40	33.8	33.3%	28.0
15/10/2025 20:00:00	30.0	3	3	30	0.0	0.0%	27.3
15/10/2025 21:00:00	35.0	5	6	40	34.2	50.0%	28.7
15/10/2025 22:00:00	33.3	7	8	35	32.5	37.5%	27.3
15/10/2025 23:00:00	35.0	1	1	35	32.5	100.0%	32.0
16/10/2025 00:00:00	0.0	0	0	0	0.0	0.0%	0.0
16/10/2025 01:00:00	30.0	1	1	30	0.0	0.0%	27.0
16/10/2025 02:00:00	0.0	0	0	0	0.0	0.0%	0.0
16/10/2025 03:00:00	30.0	1	1	30	0.0	0.0%	27.0
16/10/2025 04:00:00	0.0	0	0	0	0.0	0.0%	0.0
16/10/2025 05:00:00	35.0	1	1	35	32.5	100.0%	32.0
16/10/2025 06:00:00	30.0	3	3	30	0.0	0.0%	25.3
16/10/2025 07:00:00	35.0	7	8	40	33.8	50.0%	27.0
16/10/2025 08:00:00	30.0	31	37	40	33.3	16.2%	26.6
16/10/2025 09:00:00	34.4	20	23	40	33.5	43.5%	27.9
16/10/2025 10:00:00	33.0	20	23	40	33.3	26.1%	26.5
16/10/2025 11:00:00	32.5	18	21	40	33.5	23.8%	26.9
16/10/2025 12:00:00	33.3	25	29	45	34.4	27.6%	26.1
16/10/2025 13:00:00	30.0	23	27	35	32.5	14.8%	25.1
16/10/2025 14:00:00	33.8	26	30	40	33.5	33.3%	27.0
16/10/2025 15:00:00	33.5	30	35	40	33.3	34.3%	27.7
16/10/2025 16:00:00	32.5	31	36	40	33.1	25.0%	26.3
16/10/2025 17:00:00	33.8	27	32	40	33.9	34.4%	28.0
16/10/2025 18:00:00	30.0	15	18	40	34.2	16.7%	25.4
16/10/2025 19:00:00	28.3	3	4	30	0.0	0.0%	25.8
16/10/2025 20:00:00	35.0	4	5	40	34.2	60.0%	31.0
16/10/2025 21:00:00	35.0	4	5	40	33.8	80.0%	32.0
16/10/2025 22:00:00	35.0	4	5	40	35.0	40.0%	30.0
16/10/2025 23:00:00	0.0	0	0	0	0.0	0.0%	0.0

Incoming Summary
Broadmarston

from Wed-Oct-01-2025-12-00-AM to Sat-Oct-18-2025-10-59-AM

17/10/2025 00:00:00	40.0	1	1	40	37.5	100.0%	37.0
17/10/2025 01:00:00	0.0	0	0	0	0.0	0.0%	0.0
17/10/2025 02:00:00	0.0	0	0	0	0.0	0.0%	0.0
17/10/2025 03:00:00	35.0	1	1	35	32.5	100.0%	32.0
17/10/2025 04:00:00	0.0	0	0	0	0.0	0.0%	0.0
17/10/2025 05:00:00	25.0	1	1	25	0.0	0.0%	22.0
17/10/2025 06:00:00	33.3	6	7	35	32.5	42.9%	26.3
17/10/2025 07:00:00	32.5	14	16	40	34.2	18.8%	26.9
17/10/2025 08:00:00	34.6	25	29	40	33.4	58.6%	29.4
17/10/2025 09:00:00	33.3	26	30	40	33.0	33.3%	26.4
17/10/2025 10:00:00	35.0	16	19	45	35.4	36.8%	27.7
17/10/2025 11:00:00	31.2	19	22	35	32.5	18.2%	25.7
17/10/2025 12:00:00	33.6	23	27	40	33.6	33.3%	26.5
17/10/2025 13:00:00	32.0	17	20	35	32.5	25.0%	27.1
17/10/2025 14:00:00	35.0	19	22	45	35.0	36.4%	29.3
17/10/2025 15:00:00	32.1	34	40	40	33.6	22.5%	26.3
17/10/2025 16:00:00	36.0	29	34	45	34.8	44.1%	28.3
17/10/2025 17:00:00	31.7	22	26	35	32.5	23.1%	27.3
17/10/2025 18:00:00	33.1	26	31	45	34.0	32.3%	28.3
17/10/2025 19:00:00	33.8	11	13	40	33.5	38.5%	28.7
17/10/2025 20:00:00	37.5	7	8	40	35.8	37.5%	25.8
17/10/2025 21:00:00	30.0	4	5	35	32.5	20.0%	26.2
17/10/2025 22:00:00	37.5	4	5	40	35.0	80.0%	33.0
17/10/2025 23:00:00	35.0	2	2	35	32.5	50.0%	29.5
18/10/2025 00:00:00	0.0	0	0	0	0.0	0.0%	0.0
18/10/2025 01:00:00	0.0	0	0	0	0.0	0.0%	0.0
18/10/2025 02:00:00	35.0	1	1	35	32.5	100.0%	32.0
18/10/2025 03:00:00	35.0	1	1	35	32.5	100.0%	32.0
18/10/2025 04:00:00	30.0	1	1	30	0.0	0.0%	27.0
18/10/2025 05:00:00	0.0	0	0	0	0.0	0.0%	0.0
18/10/2025 06:00:00	0.0	0	0	0	0.0	0.0%	0.0
18/10/2025 07:00:00	33.3	6	7	35	32.5	42.9%	29.1
18/10/2025 08:00:00	35.0	9	11	40	35.8	27.3%	27.6
18/10/2025 09:00:00	31.7	14	16	35	32.5	18.8%	25.5
18/10/2025 10:00:00	33.3	15	18	40	34.5	27.8%	27.5
18/10/2025 11:00:00	35.0	6	7	40	35.0	28.6%	24.1

Day/Time Ending	85th pctl (MPH)	85th pctl cnts	Total Cnts	Max Speed	Avg Speeder	% Speeders	Avg Speed
02/10/2025 00:00:00	33.1	288	339	45	33.4	31.3%	27.6
03/10/2025 00:00:00	33.0	295	347	45	33.3	31.4%	27.0
04/10/2025 00:00:00	32.7	270	318	40	33.1	29.2%	27.2
05/10/2025 00:00:00	32.7	224	264	45	33.4	28.0%	27.0
06/10/2025 00:00:00	33.2	190	224	45	33.2	34.8%	27.1
07/10/2025 00:00:00	33.6	303	357	40	33.5	35.6%	27.6
08/10/2025 00:00:00	32.4	292	343	50	33.5	25.1%	25.8
09/10/2025 00:00:00	32.7	289	340	40	33.3	27.6%	26.8
10/10/2025 00:00:00	33.1	313	368	45	33.4	30.7%	27.0
11/10/2025 00:00:00	33.0	347	408	40	33.4	29.7%	27.0
12/10/2025 00:00:00	33.0	235	276	50	34.1	26.8%	27.0
13/10/2025 00:00:00	33.3	212	249	45	33.4	33.3%	27.0
14/10/2025 00:00:00	33.4	244	287	40	33.6	31.4%	27.3
15/10/2025 00:00:00	33.0	298	351	45	33.4	30.2%	27.3
16/10/2025 00:00:00	32.6	315	371	45	33.6	25.9%	26.4
17/10/2025 00:00:00	33.0	293	345	45	33.6	28.7%	27.0
18/10/2025 00:00:00	33.6	304	358	45	33.8	33.8%	27.5
18/10/2025 10:59:59	33.5	53	62	40	33.9	29.0%	27.0

Incoming Weekly Counts
Broadmarston

from Wed-Oct-01-2025-12-00-AM to Sat-Oct-18-2025-10-59-AM

	29/09/2025	to	05/10/2025							
	Monday	Tuesday	Wednesday	Thursday	Friday	Saturday	Sunday	Week	Weekend	Week Day 85%
Hour	29/09/2025	30/09/2025	01/10/2025	02/10/2025	03/10/2025	04/10/2025	05/10/2025	Day Avg	Avg	Avg Speed
0 - 1	*	*	1	0	1	0	3	0.67	1.5	32.5
1 - 2	*	*	0	4	2	1	2	2	1.5	33.75
2 - 3	*	*	1	3	1	2	1	1.67	1.5	35
3 - 4	*	*	1	0	0	0	0	0.33	0	45
4 - 5	*	*	3	1	1	0	1	1.67	0.5	28.33
5 - 6	*	*	5	3	6	4	3	4.67	3.5	32.1
6 - 7	*	*	12	12	14	8	2	12.67	5	32.23
7 - 8	*	*	30	33	29	14	6	30.67	10	32.87
8 - 9	*	*	22	17	23	15	19	20.67	17	31.83
9 - 10	*	*	25	16	14	20	24	18.33	22	32.67
10 - 11	*	*	14	21	11	29	14	15.33	21.5	32.67
11 - 12	*	*	22	24	19	16	21	21.67	18.5	32.07
12 - 13	*	*	26	20	27	19	26	24.33	22.5	31.83
13 - 14	*	*	24	22	27	27	17	24.33	22	32.47
14 - 15	*	*	37	33	29	14	28	33	21	32.73
15 - 16	*	*	44	41	31	20	19	38.67	19.5	32.77
16 - 17	*	*	21	34	24	33	12	26.33	22.5	31.93
17 - 18	*	*	14	17	22	18	7	17.67	12.5	34.07
18 - 19	*	*	16	21	14	10	10	17	10	30.97
19 - 20	*	*	8	11	5	5	5	8	5	34.43
20 - 21	*	*	4	3	5	4	1	4	2.5	30.83
21 - 22	*	*	3	10	7	4	1	6.67	2.5	34.43
22 - 23	*	*	4	0	2	1	0	2	0.5	32.5
23 - 24	*	*	2	1	4	0	2	2.33	1	31.1
Totals	0	0	339	347	318	264	224			
% of Total	0%	0%	22.72%	23.26%	21.31%	17.69%	15.01%			

Incoming Weekly Counts
Broadmarston

from Wed-Oct-01-2025-12-00-AM to Sat-Oct-18-2025-10-59-AM

	06/10/2025	to	12/10/2025							
	Monday	Tuesday	Wednesday	Thursday	Friday	Saturday	Sunday	Week	Weekend	Week Day 85%
Hour	06/10/2025	07/10/2025	08/10/2025	09/10/2025	10/10/2025	11/10/2025	12/10/2025	Day Avg	Avg	Avg Speed
0 - 1	3	2	0	1	1	0	1	1.4	0.5	36.25
1 - 2	1	1	0	0	0	1	0	0.4	0.5	35
2 - 3	1	1	1	2	2	1	2	1.4	1.5	30
3 - 4	0	0	0	0	0	0	1	0	0.5	0
4 - 5	1	2	2	2	0	0	1	1.4	0.5	27.5
5 - 6	8	3	3	12	4	2	1	6	1.5	31.32
6 - 7	22	13	14	12	11	2	2	14.4	2	33.5
7 - 8	36	24	27	34	34	10	11	31	10.5	33.56
8 - 9	18	20	25	21	20	21	13	20.8	17	32.94
9 - 10	17	19	24	17	17	16	20	18.8	18	31.36
10 - 11	20	19	25	33	29	24	21	25.2	22.5	30.86
11 - 12	17	25	20	19	24	30	20	21	25	31.16
12 - 13	18	18	15	21	26	29	38	19.6	33.5	31.86
13 - 14	28	27	25	25	32	15	17	27.4	16	32.3
14 - 15	30	44	36	37	51	20	16	39.6	18	32.34
15 - 16	33	45	46	40	41	18	22	41	20	33.02
16 - 17	45	27	27	37	39	32	18	35	25	33.28
17 - 18	18	25	20	20	26	22	20	21.8	21	33.38
18 - 19	15	12	15	9	21	13	11	14.4	12	34.06
19 - 20	9	7	5	8	7	8	3	7.2	5.5	31.84
20 - 21	7	2	4	5	7	2	3	5	2.5	34
21 - 22	7	5	3	7	9	4	3	6.2	3.5	33.66
22 - 23	2	2	1	2	5	2	3	2.4	2.5	35
23 - 24	1	0	2	4	2	4	2	1.8	3	35
Totals	357	343	340	368	408	276	249			
% of Total	15.25%	14.65%	14.52%	15.72%	17.43%	11.79%	10.64%			

Incoming Weekly Counts
Broadmarston

from Wed-Oct-01-2025-12-00-AM to Sat-Oct-18-2025-10-59-AM

	13/10/2025	to	19/10/2025							
	Monday	Tuesday	Wednesday	Thursday	Friday	Saturday	Sunday	Week	Weekend	Week Day 85%
Hour	13/10/2025	14/10/2025	15/10/2025	16/10/2025	17/10/2025	18/10/2025	19/10/2025	Day Avg	Avg	Avg Speed
0 - 1	1	0	0	1	0	0	*	0.4	0	30
1 - 2	0	0	0	0	0	1	*	0	1	0
2 - 3	0	2	1	1	1	1	*	1	1	32.5
3 - 4	0	1	1	0	0	1	*	0.4	1	32.5
4 - 5	0	4	2	1	1	0	*	1.6	0	33.33
5 - 6	2	5	4	3	7	0	*	4.2	0	31.82
6 - 7	11	17	19	8	16	7	*	14.2	7	32.52
7 - 8	23	26	29	37	29	11	*	28.8	11	32.78
8 - 9	19	31	36	23	30	16	*	27.8	16	32.14
9 - 10	21	21	15	23	19	18	*	19.8	18	32.02
10 - 11	17	13	19	21	22	7	*	18.4	7	31.84
11 - 12	20	27	29	29	27	*	*	26.4	0	32.2
12 - 13	19	18	20	27	20	*	*	20.8	0	31.66
13 - 14	20	27	33	30	22	*	*	26.4	0	34
14 - 15	37	45	47	35	40	*	*	40.8	0	32.76
15 - 16	26	32	34	36	34	*	*	32.4	0	33.24
16 - 17	24	30	25	32	26	*	*	27.4	0	33.86
17 - 18	17	18	27	18	31	*	*	22.2	0	31.62
18 - 19	7	13	12	4	13	*	*	9.8	0	32.58
19 - 20	7	9	3	5	8	*	*	6.4	0	35
20 - 21	4	3	6	5	5	*	*	4.6	0	33
21 - 22	9	5	8	5	5	*	*	6.4	0	35.32
22 - 23	3	4	1	0	2	*	*	2	0	34.38
23 - 24	0	0	0	1	0	*	*	0.2	0	40
Totals	287	351	371	345	358	62	0			
% of Total	16.18%	19.79%	20.91%	19.45%	20.18%	3.49%	0%			

Incoming Monthly Counts
Broadmarston

from Wed-Oct-01-2025-12-00-AM to Sat-Oct-18-2025-10-59-AM

	Oct 2025									
Hour	Monday	Tuesday	Wednesday	Thursday	Friday	Saturday	Sunday	Week Day Avg	Weekend Avg	Week Day 85% Avg Speed
0 - 1	4	2	1	2	2	0	4	2.2	2	35
1 - 2	1	1	0	4	2	3	2	1.6	2.5	34.38
2 - 3	1	3	3	6	4	4	3	3.4	3.5	32.5
3 - 4	0	1	2	0	0	1	1	0.6	1	35
4 - 5	1	6	7	4	2	0	2	4	1	27.26
5 - 6	10	8	12	18	17	6	4	13	5	30.9
6 - 7	33	30	45	32	41	17	4	36.2	10.5	32.94
7 - 8	59	50	86	104	92	35	17	78.2	26	33.26
8 - 9	37	51	83	61	73	52	32	61	42	32.34
9 - 10	38	40	64	56	50	54	44	49.6	49	31.92
10 - 11	37	32	58	75	62	60	35	52.8	47.5	31.7
11 - 12	37	52	71	72	70	46	41	60.4	43.5	31.54
12 - 13	37	36	61	68	73	48	64	55	56	32.14
13 - 14	48	54	82	77	81	42	34	68.4	38	33.08
14 - 15	67	89	120	105	120	34	44	100.2	39	32.66
15 - 16	59	77	124	117	106	38	41	96.6	39.5	33.08
16 - 17	69	57	73	103	89	65	30	78.2	47.5	33.4
17 - 18	35	43	61	55	79	40	27	54.6	33.5	33.12
18 - 19	22	25	43	34	48	23	21	34.4	22	33.14
19 - 20	16	16	16	24	20	13	8	18.4	10.5	34.92
20 - 21	11	5	14	13	17	6	4	12	5	33.62
21 - 22	16	10	14	22	21	8	4	16.6	6	34.56
22 - 23	5	6	6	2	9	3	3	5.6	3	34
23 - 24	1	0	4	6	6	4	4	3.4	4	34.58
Totals	644	694	1050	1060	1084	602	473			
% of Total	11.49%	12.38%	18.73%	18.9%	19.33%	10.74%	8.44%			

Incoming Weekly Speeds
Broadmarston

from Wed-Oct-01-2025-12-00-AM to Sat-Oct-18-2025-10-59-AM

	29/09/2025	to	05/10/2025							
	Monday	Tuesday	Wednesday	Thursday	Friday	Saturday	Sunday	Week	Weekend	Week Day 85%
Hour	29/09/2025	30/09/2025	01/10/2025	02/10/2025	03/10/2025	04/10/2025	05/10/2025	Day Avg	Avg	Avg Speed
0 - 1	*	*	32	0	27	0	25.33	29.5	25.33	32.5
1 - 2	*	*	0	28.5	32.5	27	24.5	29.83	25.33	33.75
2 - 3	*	*	27	32	32	27	32	31	28.67	35
3 - 4	*	*	42	0	0	0	0	42	0	45
4 - 5	*	*	32.33	27	7	0	12	26.2	12	28.33
5 - 6	*	*	26.2	22	24	23.5	30.33	24.36	26.43	32.1
6 - 7	*	*	27.25	28.42	24.79	28.25	32	26.71	29	32.23
7 - 8	*	*	27.67	25.36	28.52	27.86	25.5	27.11	27.15	32.87
8 - 9	*	*	27.68	25.12	28.13	27.07	24.26	27.15	25.5	31.83
9 - 10	*	*	28.36	25.94	29.64	27.75	26.38	27.98	27	32.67
10 - 11	*	*	27.71	26.14	26.64	24.83	28.14	26.74	25.91	32.67
11 - 12	*	*	27.36	25.12	26.37	29.38	26.24	26.25	27.59	32.07
12 - 13	*	*	27.27	27.25	27.56	26.42	26.92	27.37	26.71	31.83
13 - 14	*	*	27.54	26.64	28	25.93	27.88	27.44	26.68	32.47
14 - 15	*	*	26.76	28.33	27.24	28.21	27.32	27.42	27.62	32.73
15 - 16	*	*	25.86	27.27	28.06	25.5	26.26	26.95	25.87	32.77
16 - 17	*	*	28.57	26.74	25.29	27.7	30.42	26.78	28.42	31.93
17 - 18	*	*	28.93	29.53	29.09	26.67	30	29.19	27.6	34.07
18 - 19	*	*	25.31	27.19	25.36	28.5	26.1	26.1	27.3	30.97
19 - 20	*	*	32.62	29	27	26	31.2	29.79	28.6	34.43
20 - 21	*	*	28.25	25.33	23.2	31	32	25.42	31.2	30.83
21 - 22	*	*	32	30.2	25.57	26	42	28.85	29.2	34.43
22 - 23	*	*	27.25	0	29.5	32	0	28	32	32.5
23 - 24	*	*	32	27	25.75	0	27	27.71	27	31.1
Totals	0	0	27.6	27	27.2	27	27.1			
% of Total	0%	0%	20.31%	19.87%	20.01%	19.87%	19.94%			

Incoming Weekly Speeds
Broadmarston

from Wed-Oct-01-2025-12-00-AM to Sat-Oct-18-2025-10-59-AM

	06/10/2025	to	12/10/2025							
	Monday	Tuesday	Wednesday	Thursday	Friday	Saturday	Sunday	Week	Weekend	Week Day 85%
Hour	06/10/2025	07/10/2025	08/10/2025	09/10/2025	10/10/2025	11/10/2025	12/10/2025	Day Avg	Avg	Avg Speed
0 - 1	32	29.5	0	32	32	0	27	31.29	27	36.25
1 - 2	22	42	0	0	0	47	0	32	47	35
2 - 3	22	32	27	24.5	27	32	29.5	26.29	30.33	30
3 - 4	0	0	0	0	0	0	27	0	27	0
4 - 5	7	17	29.5	24.5	0	0	12	21.29	12	27.5
5 - 6	24.62	25.33	27	23.5	24.5	32	22	24.47	28.67	31.32
6 - 7	25.86	29.69	27.14	23	28.91	29.5	29.5	26.79	29.5	33.5
7 - 8	28.83	28.21	28.78	28.53	28.91	28.5	28.09	28.68	28.29	33.56
8 - 9	27.67	25.4	26.76	26.67	27.95	28.19	19.92	26.87	25.03	32.94
9 - 10	26.94	26.84	26.21	25.76	27.76	25.81	27.2	26.67	26.58	31.36
10 - 11	28.45	20.63	26.68	22.85	25.03	24.62	27.95	24.67	26.18	30.86
11 - 12	26.88	19.96	24.9	27.95	27.54	26.43	27.45	25.2	26.84	31.16
12 - 13	26.61	21.11	25.53	27.9	28.35	25.48	25.84	26.17	25.69	31.86
13 - 14	26.89	24.44	27	28.68	28.34	27.13	28.41	27.09	27.81	32.3
14 - 15	27.1	26.18	26.64	26.43	26.1	28.85	25.75	26.43	27.47	32.34
15 - 16	28.42	27.22	27.13	27.65	26.76	25.56	25.36	27.39	25.45	33.02
16 - 17	28.69	27.78	27.22	27.14	26.49	26.84	28.56	27.5	27.46	33.28
17 - 18	27.22	27.16	25.45	29.95	24.69	28.82	28.7	26.78	28.76	33.38
18 - 19	28.13	28.42	29.07	28.78	26.05	26.69	28.09	27.85	27.33	34.06
19 - 20	28.11	26.29	19.2	30.25	25	24.75	28.67	26.39	25.82	31.84
20 - 21	30.57	24.5	25.75	28	30.71	29.5	29	28.84	29.2	34
21 - 22	27	29	28.67	27.14	26.56	27	28.67	27.39	27.71	33.66
22 - 23	29.5	32	27	27	29	37	32	29.08	34	35
23 - 24	32	0	29.5	30.75	32	30.75	37	30.89	32.83	35
Totals	27.6	25.8	26.8	27	27	27	27			
% of Total	14.67%	13.71%	14.24%	14.35%	14.35%	14.35%	14.35%			

Incoming Weekly Speeds
Broadmarston

from Wed-Oct-01-2025-12-00-AM to Sat-Oct-18-2025-10-59-AM

	13/10/2025	to	19/10/2025							
	Monday	Tuesday	Wednesday	Thursday	Friday	Saturday	Sunday	Week	Weekend	Week Day 85%
Hour	13/10/2025	14/10/2025	15/10/2025	16/10/2025	17/10/2025	18/10/2025	19/10/2025	Day Avg	Avg	Avg Speed
0 - 1	27	0	0	27	0	0	*	27	*	30
1 - 2	0	0	0	0	0	32	*	*	32	0
2 - 3	0	27.5	32	27	32	32	*	29.2	32	32.5
3 - 4	0	22	37	0	0	27	*	29.5	27	32.5
4 - 5	0	22.25	24.5	32	22	0	*	24	*	33.33
5 - 6	27	24	29.5	25.33	26.29	0	*	26.29	*	31.82
6 - 7	26.82	28.24	26.47	27	26.88	29.14	*	27.1	29.14	32.52
7 - 8	29.78	27.62	27.31	26.59	29.45	27.64	*	28.01	27.64	32.78
8 - 9	26.95	26.48	25.89	27.91	26.37	25.5	*	26.6	25.5	32.14
9 - 10	23.86	26.1	20.8	26.52	27.68	27.5	*	25.22	27.5	32.02
10 - 11	27.41	27.15	27	26.9	25.68	24.14	*	26.76	24.14	31.84
11 - 12	26.7	24.41	23.17	26.1	26.52	*	*	25.29	*	32.2
12 - 13	23.16	29.83	26.65	25.11	27.15	*	*	26.26	*	31.66
13 - 14	28.85	27.33	25.24	27.03	29.32	*	*	27.3	*	34
14 - 15	28.14	27.44	27.13	27.66	26.33	*	*	27.31	*	32.76
15 - 16	27.38	27.53	27.65	26.31	28.29	*	*	27.42	*	33.24
16 - 17	28.88	28.13	27.6	28	27.31	*	*	27.98	*	33.86
17 - 18	24.29	28.56	26.93	25.44	28.26	*	*	26.92	*	31.62
18 - 19	29.86	26.38	28	25.75	28.69	*	*	27.84	*	32.58
19 - 20	27	31	27.33	31	25.75	*	*	28.47	*	35
20 - 21	27	27	28.67	32	26.2	*	*	28.35	*	33
21 - 22	31.56	30.2	27.25	30	33	*	*	30.25	*	35.32
22 - 23	32.33	29.5	32	0	29.5	*	*	30.6	*	34.38
23 - 24	0	0	0	37	0	*	*	37	*	40
Totals	27.3	27.3	26.4	26.9	27.5	26.9	0			
% of Total	16.82%	16.82%	16.27%	16.57%	16.94%	16.57%	0%			

Incoming Monthly Speeds
Broadmarston

from Wed-Oct-01-2025-12-00-AM to Sat-Oct-18-2025-10-59-AM

	Oct 2025									
Hour	Monday	Tuesday	Wednesday	Thursday	Friday	Saturday	Sunday	Week Day Avg	Weekend Avg	Week Day 85% Avg Speed
0 - 1	30.75	29.5	32	29.5	29.5	0	25.75	30.18	25.75	35
1 - 2	22	42	0	28.5	32.5	35.33	24.5	30.38	31	34.38
2 - 3	22	29	28.67	28.67	29.5	29.5	30.33	28.53	29.86	32.5
3 - 4	0	22	39.5	0	0	27	27	33.67	27	35
4 - 5	7	20.5	29.29	27	14.5	0	12	23.6	12	27.26
5 - 6	25.1	24.5	27.5	23.56	25.06	26.33	28.25	25.03	27.1	30.9
6 - 7	26.18	28.87	26.89	26.03	26.71	28.76	30.75	26.9	29.14	32.94
7 - 8	29.2	27.9	27.9	26.84	28.96	27.97	27.18	28.06	27.71	33.26
8 - 9	27.3	26.06	26.63	26.7	27.36	27.04	22.5	26.8	25.31	32.34
9 - 10	25.24	26.45	25.78	26.12	28.26	27.09	26.75	26.38	26.94	31.92
10 - 11	27.97	23.28	27.03	24.91	25.55	24.67	28.03	25.76	25.91	31.7
11 - 12	26.78	22.27	24.96	26.26	26.83	27.46	26.83	25.46	27.16	31.54
12 - 13	24.84	25.47	26.64	26.6	27.73	25.85	26.28	26.52	26.1	32.14
13 - 14	27.71	25.89	26.45	27.45	28.49	26.36	28.15	27.25	27.16	33.08
14 - 15	27.67	26.82	26.87	27.44	26.45	28.59	26.75	26.99	27.55	32.66
15 - 16	27.97	27.35	26.82	27.1	27.63	25.53	25.78	27.29	25.66	33.08
16 - 17	28.75	27.96	27.74	27.27	26.4	27.28	29.3	27.52	27.92	33.4
17 - 18	25.8	27.74	26.9	28.35	27.32	27.85	29.04	27.3	28.33	33.12
18 - 19	28.68	27.36	27.37	27.44	26.56	27.48	27.14	27.33	27.32	33.14
19 - 20	27.62	28.94	27.44	29.83	25.8	25.23	30.25	28	27.14	34.92
20 - 21	29.27	26	27.71	28.92	27.18	30.5	29.75	27.97	30.2	33.62
21 - 22	29.56	29.6	28.57	29.18	27.76	26.5	32	28.84	28.33	34.56
22 - 23	31.2	30.33	28	27	29.22	35.33	32	29.39	33.67	34
23 - 24	32	0	30.75	31.17	27.83	30.75	32	29.94	31.38	34.58
Totals	27.5	26.6	26.9	27	27.3	27	27			
% of Total	14.53%	14.05%	14.21%	14.26%	14.42%	14.26%	14.26%			

Incoming Weekly EightyFifthSpeeds
Broadmarston

from Wed-Oct-01-2025-12-00-AM to Sat-Oct-18-2025-10-59-AM

	29/09/2025	to	05/10/2025							
	Monday	Tuesday	Wednesday	Thursday	Friday	Saturday	Sunday	Week	Weekend	Week Day 85%
Hour	29/09/2025	30/09/2025	01/10/2025	02/10/2025	03/10/2025	04/10/2025	05/10/2025	Day Avg	Avg	Avg Speed
0 - 1	*	*	35	0	30	0	30	32.5	30	32.5
1 - 2	*	*	0	32.5	35	30	30	33.75	30	33.75
2 - 3	*	*	30	40	35	30	35	35	32.5	35
3 - 4	*	*	45	0	0	0	0	45	0	45
4 - 5	*	*	45	30	10	0	15	28.33	15	28.33
5 - 6	*	*	28.8	35	32.5	30	35	32.1	32.5	32.1
6 - 7	*	*	30	35	31.7	34	40	32.23	37	32.23
7 - 8	*	*	33.5	32.1	33	32.5	30	32.87	31.25	32.87
8 - 9	*	*	32.5	29.4	33.6	32.5	32	31.83	32.25	31.83
9 - 10	*	*	34.3	29.5	34.2	34	32.5	32.67	33.25	32.67
10 - 11	*	*	33	33.3	31.7	29.7	35	32.67	32.35	32.67
11 - 12	*	*	32.5	32.5	31.2	34.2	32.9	32.07	33.55	32.07
12 - 13	*	*	32.5	30	33	32.5	31.2	31.83	31.85	31.83
13 - 14	*	*	32.5	32	32.9	31	32	32.47	31.5	32.47
14 - 15	*	*	31.9	33.4	32.9	33.8	33.8	32.73	33.8	32.73
15 - 16	*	*	31.8	33	33.5	30	32.5	32.77	31.25	32.77
16 - 17	*	*	33.3	32.5	30	32.8	34.2	31.93	33.5	31.93
17 - 18	*	*	33.6	33.6	35	32.5	33.8	34.07	33.15	34.07
18 - 19	*	*	30	33.6	29.3	36.7	30	30.97	33.35	30.97
19 - 20	*	*	40	33.3	30	32.5	35	34.43	33.75	34.43
20 - 21	*	*	32.5	30	30	35	35	30.83	35	30.83
21 - 22	*	*	40	33.3	30	30	45	34.43	37.5	34.43
22 - 23	*	*	30	0	35	35	0	32.5	35	32.5
23 - 24	*	*	35	30	28.3	0	35	31.1	35	31.1
Totals	0	0	782.7	684	717.8	648.7	724.9			
% of Total	0%	0%	22%	19.22%	20.17%	18.23%	20.37%			

Incoming Weekly EightyFifthSpeeds
Broadmarston

from Wed-Oct-01-2025-12-00-AM to Sat-Oct-18-2025-10-59-AM

	06/10/2025	to	12/10/2025							
	Monday	Tuesday	Wednesday	Thursday	Friday	Saturday	Sunday	Week	Weekend	Week Day 85%
Hour	06/10/2025	07/10/2025	08/10/2025	09/10/2025	10/10/2025	11/10/2025	12/10/2025	Day Avg	Avg	Avg Speed
0 - 1	40	35	0	35	35	0	30	36.25	30	36.25
1 - 2	25	45	0	0	0	50	0	35	50	35
2 - 3	25	35	30	30	30	35	35	30	35	30
3 - 4	0	0	0	0	0	0	30	0	30	0
4 - 5	10	30	40	30	0	0	15	27.5	15	27.5
5 - 6	33.3	35	30	30	28.3	40	25	31.32	32.5	31.32
6 - 7	31.7	34.2	33.3	33.3	35	35	40	33.5	37.5	33.5
7 - 8	34.6	32.9	33.1	33.3	33.9	33.3	33.8	33.56	33.55	33.56
8 - 9	35	30	32.9	33	33.8	34.3	28.3	32.94	31.3	32.94
9 - 10	31.7	32.5	29.7	31.2	31.7	33.3	34.4	31.36	33.85	31.36
10 - 11	33.3	29	32.9	29.1	30	30	33.1	30.86	31.55	30.86
11 - 12	31.2	27.1	29.5	35	33	31.2	33.1	31.16	32.15	31.16
12 - 13	31.7	28.6	31.7	32.9	34.4	32	30.8	31.86	31.4	31.86
13 - 14	33.3	30	32.5	33.5	32.2	32.5	31.2	32.3	31.85	32.3
14 - 15	33.1	31.8	32.8	32.3	31.7	37.5	32.5	32.34	35	32.34
15 - 16	34.3	32.5	32.9	33.1	32.3	30	33	33.02	31.5	33.02
16 - 17	33.8	33.9	32.5	32.9	33.3	30.8	34.2	33.28	32.5	33.28
17 - 18	32	33.8	33.6	35	32.5	33.6	33.6	33.38	33.6	33.38
18 - 19	34	35	36.7	35	29.6	31.7	35	34.06	33.35	34.06
19 - 20	35	29.2	25	37.5	32.5	30	35	31.84	32.5	31.84
20 - 21	35	35	30	32.5	37.5	35	35	34	35	34
21 - 22	35	33.3	35	30	35	30	35	33.66	32.5	33.66
22 - 23	40	40	30	30	35	40	45	35	42.5	35
23 - 24	35	0	35	35	35	35	45	35	40	35
Totals	743	728.8	679.1	719.6	691.7	720.2	763			
% of Total	14.73%	14.44%	13.46%	14.26%	13.71%	14.27%	15.12%			

Incoming Weekly EightyFifthSpeeds
Broadmarston

from Wed-Oct-01-2025-12-00-AM to Sat-Oct-18-2025-10-59-AM

	13/10/2025	to	19/10/2025							
	Monday	Tuesday	Wednesday	Thursday	Friday	Saturday	Sunday	Week	Weekend	Week Day 85%
Hour	13/10/2025	14/10/2025	15/10/2025	16/10/2025	17/10/2025	18/10/2025	19/10/2025	Day Avg	Avg	Avg Speed
0 - 1	30	0	0	30	0	0	*	30	0	30
1 - 2	0	0	0	0	0	35	*	0	35	0
2 - 3	0	30	35	30	35	35	*	32.5	35	32.5
3 - 4	0	25	40	0	0	30	*	32.5	30	32.5
4 - 5	0	28.3	45	35	25	0	*	33.33	0	33.33
5 - 6	35	28.3	32.5	30	33.3	0	*	31.82	0	31.82
6 - 7	30	33.1	32	35	32.5	33.3	*	32.52	33.3	32.52
7 - 8	35	33.1	31.2	30	34.6	35	*	32.78	35	32.78
8 - 9	32	30	31	34.4	33.3	31.7	*	32.14	31.7	32.14
9 - 10	30	29.6	32.5	33	35	33.3	*	32.02	33.3	32.02
10 - 11	34	29.5	32	32.5	31.2	35	*	31.84	35	31.84
11 - 12	33.3	31.2	29.6	33.3	33.6	*	*	32.2	0	32.2
12 - 13	29.4	34.4	32.5	30	32	*	*	31.66	0	31.66
13 - 14	34.3	35	31.9	33.8	35	*	*	34	0	34
14 - 15	33.2	32.7	32.3	33.5	32.1	*	*	32.76	0	32.76
15 - 16	31.2	32.9	33.6	32.5	36	*	*	33.24	0	33.24
16 - 17	35	33.8	35	33.8	31.7	*	*	33.86	0	33.86
17 - 18	28.8	33.3	32.9	30	33.1	*	*	31.62	0	31.62
18 - 19	35	32.5	33.3	28.3	33.8	*	*	32.58	0	32.58
19 - 20	32.5	40	30	35	37.5	*	*	35	0	35
20 - 21	30	35	35	35	30	*	*	33	0	33
21 - 22	37.5	33.3	33.3	35	37.5	*	*	35.32	0	35.32
22 - 23	35	32.5	35	0	35	*	*	34.38	0	34.38
23 - 24	0	0	0	40	0	*	*	40	0	40
Totals	621.2	673.5	705.6	690.1	667.2	268.3	0			
% of Total	17.13%	18.57%	19.46%	19.03%	18.4%	7.4%	0%			

Incoming Monthly EightyFifthSpeeds
Broadmarston

from Wed-Oct-01-2025-12-00-AM to Sat-Oct-18-2025-10-59-AM

	Oct 2025									
Hour	Monday	Tuesday	Wednesday	Thursday	Friday	Saturday	Sunday	Week Day Avg	Weekend Avg	Week Day 85% Avg Speed
0 - 1	35	35	35	35	35	0	28.3	35	28.3	35
1 - 2	25	45	0	32.5	35	50	30	34.38	40	34.38
2 - 3	25	35	35	35	32.5	32.5	35	32.5	33.75	32.5
3 - 4	0	25	45	0	0	30	30	35	30	35
4 - 5	10	28.8	42.5	30	25	0	15	27.26	15	27.26
5 - 6	32.5	30	30	30	32	35	32.5	30.9	33.75	30.9
6 - 7	31	33.9	32.2	34.5	33.1	33.3	37.5	32.94	35.4	32.94
7 - 8	34.5	33	32.7	32.3	33.8	33.8	33	33.26	33.4	33.26
8 - 9	33.1	30	32.2	33.2	33.2	32.9	30.8	32.34	31.85	32.34
9 - 10	31	30.8	32.5	31.5	33.8	33.6	33.4	31.92	33.5	31.92
10 - 11	33.6	29.4	32.6	32	30.9	30	33.9	31.7	31.95	31.7
11 - 12	32.1	29.1	30	33.4	33.1	32.5	33	31.54	32.75	31.54
12 - 13	30	33.3	32.3	31.8	33.3	32.3	31	32.14	31.65	32.14
13 - 14	33.8	33	32.5	33	33.1	31.4	32.2	33.08	31.8	33.08
14 - 15	33.2	32.5	32.3	33.1	32.2	36	32.9	32.66	34.45	32.66
15 - 16	33.7	32.6	32.7	32.7	33.7	30	32.7	33.08	31.35	33.08
16 - 17	34.3	33.5	33.7	33.3	32.2	32	34.6	33.4	33.3	33.4
17 - 18	30.8	34	33.3	34	33.5	33.3	33.6	33.12	33.45	33.12
18 - 19	34.4	33.6	33.9	33.1	30.7	35	33.8	33.14	34.4	33.14
19 - 20	33.3	35	37.5	35	33.8	32.5	35	34.92	33.75	34.92
20 - 21	33.8	32.5	34	34	33.8	35	32.5	33.62	33.75	33.62
21 - 22	36.7	33.3	34	33.8	35	32.5	35	34.56	33.75	34.56
22 - 23	35	35	35	30	35	40	45	34	42.5	34
23 - 24	35	0	33.3	37.5	32.5	35	35	34.58	35	34.58

Summary of Violators
Broadmarston

from Wed-Oct-01-2025-12-00-AM to Sat-Oct-18-2025-10-59-AM

Starting Hour	Count	Average Speed of all Traffic	Violator Counts	Average Speed of Violators
00:00:00	0	N/A	N/A	N/A
01:00:00	1	32.5	1	32.5
02:00:00	1	27.5	0	0.0
03:00:00	1	42.5	1	42.5
04:00:00	3	23.3	1	42.5
05:00:00	5	21.0	0	0.0
06:00:00	12	18.8	2	35.0
07:00:00	27	17.7	10	33.0
08:00:00	24	18.8	6	33.3
09:00:00	25	23.0	9	33.6
10:00:00	13	29.0	5	33.5
11:00:00	23	23.9	7	32.5
12:00:00	24	19.3	6	33.3
13:00:00	26	22.6	7	33.2
14:00:00	35	16.1	9	33.1
15:00:00	43	15.3	10	32.5
16:00:00	24	23.3	10	32.5
17:00:00	12	26.0	5	32.5
18:00:00	17	18.5	5	32.5
19:00:00	10	28.8	5	36.5
20:00:00	1	32.5	1	32.5
21:00:00	6	30.0	3	34.2
22:00:00	4	21.9	1	37.5
23:00:00	2	32.5	2	32.5
00:00:00	0	N/A	N/A	N/A
01:00:00	4	20.6	2	32.5
02:00:00	3	32.5	2	35.0
03:00:00	0	N/A	N/A	N/A
04:00:00	1	27.5	0	0.0
05:00:00	2	25.0	1	32.5
06:00:00	10	23.8	3	34.2
07:00:00	32	19.5	10	33.5
08:00:00	21	21.2	3	34.2
09:00:00	16	19.7	1	32.5
10:00:00	21	22.4	9	32.5
11:00:00	21	17.6	5	32.5
12:00:00	23	20.3	5	36.5
13:00:00	17	15.6	2	32.5
14:00:00	35	18.4	17	32.5
15:00:00	42	17.4	14	33.2
16:00:00	34	15.2	8	33.1
17:00:00	18	23.1	8	33.8
18:00:00	17	21.3	6	34.2
19:00:00	16	21.9	7	33.2
20:00:00	3	25.8	0	0.0
21:00:00	10	24.5	6	32.5
22:00:00	0	N/A	N/A	N/A
23:00:00	1	27.5	0	0.0

Summary of Violators
Broadmarston

from Wed-Oct-01-2025-12-00-AM to Sat-Oct-18-2025-10-59-AM

00:00:00	1	27.5	0	0.0
01:00:00	2	16.3	2	32.5
02:00:00	1	32.5	1	32.5
03:00:00	0	N/A	N/A	N/A
04:00:00	1	7.5	0	0.0
05:00:00	6	17.5	2	32.5
06:00:00	11	17.3	1	32.5
07:00:00	29	17.6	10	32.5
08:00:00	24	18.0	9	32.5
09:00:00	16	26.3	8	33.8
10:00:00	9	26.9	3	32.5
11:00:00	20	21.5	4	32.5
12:00:00	28	16.3	7	33.9
13:00:00	27	18.7	8	33.1
14:00:00	28	17.6	8	33.1
15:00:00	28	16.4	11	33.0
16:00:00	25	19.6	4	33.8
17:00:00	23	19.5	10	34.0
18:00:00	15	21.0	1	32.5
19:00:00	6	26.7	1	32.5
20:00:00	4	16.9	0	0.0
21:00:00	8	26.9	2	32.5
22:00:00	2	30.0	1	32.5
23:00:00	3	25.8	0	0.0
00:00:00	1	27.5	0	0.0
01:00:00	1	27.5	0	0.0
02:00:00	2	27.5	0	0.0
03:00:00	0	N/A	N/A	N/A
04:00:00	0	N/A	N/A	N/A
05:00:00	4	19.4	1	32.5
06:00:00	7	28.2	4	32.5
07:00:00	15	23.0	5	32.5
08:00:00	13	25.4	3	32.5
09:00:00	19	21.1	6	34.2
10:00:00	27	16.0	4	32.5
11:00:00	20	22.3	7	33.2
12:00:00	18	19.3	6	32.5
13:00:00	26	19.7	5	32.5
14:00:00	13	25.2	6	33.3
15:00:00	23	15.9	3	35.8
16:00:00	32	18.7	10	33.0
17:00:00	16	18.9	3	34.2
18:00:00	14	27.0	5	36.5
19:00:00	4	25.0	1	32.5
20:00:00	5	26.0	3	34.2
21:00:00	4	20.6	1	32.5
22:00:00	1	32.5	1	32.5
23:00:00	0	N/A	N/A	N/A
00:00:00	3	25.8	0	0.0

Summary of Violators
Broadmarston

from Wed-Oct-01-2025-12-00-AM to Sat-Oct-18-2025-10-59-AM

01:00:00	2	25.0	0	0.0
02:00:00	1	32.5	1	32.5
03:00:00	0	N/A	N/A	N/A
04:00:00	0	N/A	N/A	N/A
05:00:00	4	26.3	2	32.5
06:00:00	1	37.5	1	37.5
07:00:00	7	22.1	1	32.5
08:00:00	19	19.3	5	32.5
09:00:00	22	18.4	7	32.5
10:00:00	14	28.2	7	33.9
11:00:00	21	17.9	8	32.5
12:00:00	26	18.0	6	33.3
13:00:00	18	16.5	4	32.5
14:00:00	29	16.3	11	33.9
15:00:00	18	14.2	5	32.5
16:00:00	12	28.1	7	33.2
17:00:00	7	22.5	4	32.5
18:00:00	10	23.8	3	32.5
19:00:00	5	24.0	2	32.5
20:00:00	2	35.0	2	35.0
21:00:00	1	42.5	1	42.5
22:00:00	0	N/A	N/A	N/A
23:00:00	2	27.5	1	32.5
00:00:00	2	30.0	1	32.5
01:00:00	2	30.0	1	37.5
02:00:00	1	22.5	0	0.0
03:00:00	0	N/A	N/A	N/A
04:00:00	1	7.5	0	0.0
05:00:00	8	22.8	3	32.5
06:00:00	21	17.6	3	34.2
07:00:00	31	19.0	15	33.8
08:00:00	23	22.9	8	34.4
09:00:00	17	21.0	4	33.8
10:00:00	18	19.7	6	33.3
11:00:00	18	22.6	4	32.5
12:00:00	18	21.1	4	33.8
13:00:00	23	23.8	10	33.0
14:00:00	37	17.6	10	33.0
15:00:00	29	18.4	17	33.4
16:00:00	43	15.3	20	33.3
17:00:00	24	18.3	5	32.5
18:00:00	15	24.8	6	33.3
19:00:00	9	28.6	2	35.0
20:00:00	6	30.0	3	32.5
21:00:00	8	28.8	3	35.8
22:00:00	2	30.0	1	37.5
23:00:00	1	32.5	1	32.5
00:00:00	2	30.0	1	32.5
01:00:00	0	N/A	N/A	N/A

Summary of Violators
Broadmarston

from Wed-Oct-01-2025-12-00-AM to Sat-Oct-18-2025-10-59-AM

02:00:00	2	37.5	2	37.5
03:00:00	0	N/A	N/A	N/A
04:00:00	2	17.5	0	0.0
05:00:00	3	25.8	1	32.5
06:00:00	11	19.8	7	33.2
07:00:00	26	14.1	8	33.1
08:00:00	18	20.0	3	34.2
09:00:00	20	24.3	5	33.5
10:00:00	19	16.8	2	32.5
11:00:00	25	15.6	0	0.0
12:00:00	16	18.1	1	32.5
13:00:00	28	16.8	4	32.5
14:00:00	42	14.9	10	32.5
15:00:00	46	13.9	13	32.5
16:00:00	29	21.4	11	33.9
17:00:00	25	23.3	8	35.6
18:00:00	13	22.7	5	35.5
19:00:00	7	26.8	0	0.0
20:00:00	2	25.0	1	32.5
21:00:00	5	29.5	3	32.5
22:00:00	2	32.5	1	37.5
23:00:00	0	N/A	N/A	N/A
00:00:00	0	N/A	N/A	N/A
01:00:00	0	N/A	N/A	N/A
02:00:00	1	27.5	0	0.0
03:00:00	0	N/A	N/A	N/A
04:00:00	2	30.0	1	37.5
05:00:00	3	27.5	0	0.0
06:00:00	14	23.9	4	33.8
07:00:00	27	18.2	9	33.1
08:00:00	24	22.1	8	33.1
09:00:00	24	15.9	3	32.5
10:00:00	21	20.2	6	33.3
11:00:00	23	19.0	4	33.8
12:00:00	17	21.2	3	32.5
13:00:00	25	19.4	7	33.2
14:00:00	36	17.0	10	33.0
15:00:00	41	13.5	13	32.9
16:00:00	28	21.8	8	33.8
17:00:00	23	17.1	7	33.2
18:00:00	12	27.9	5	32.5
19:00:00	8	15.3	3	37.5
20:00:00	4	23.8	0	0.0
21:00:00	4	30.0	2	32.5
22:00:00	1	27.5	0	0.0
23:00:00	1	27.5	0	0.0
00:00:00	2	32.5	2	32.5
01:00:00	0	N/A	N/A	N/A
02:00:00	2	25.0	0	0.0

Summary of Violators
Broadmarston

from Wed-Oct-01-2025-12-00-AM to Sat-Oct-18-2025-10-59-AM

03:00:00	0	N/A	N/A	N/A
04:00:00	2	25.0	0	0.0
05:00:00	11	15.2	1	32.5
06:00:00	8	27.5	3	35.8
07:00:00	33	14.1	12	32.5
08:00:00	24	20.3	8	33.8
09:00:00	17	19.6	5	32.5
10:00:00	33	16.8	3	34.2
11:00:00	21	22.5	6	34.2
12:00:00	20	21.4	7	33.2
13:00:00	24	20.3	11	33.0
14:00:00	38	19.6	12	32.5
15:00:00	39	16.2	13	32.9
16:00:00	37	19.5	11	33.9
17:00:00	23	22.3	9	34.2
18:00:00	9	26.1	2	37.5
19:00:00	8	27.2	4	35.0
20:00:00	4	27.5	1	32.5
21:00:00	8	24.7	2	32.5
22:00:00	2	27.5	0	0.0
23:00:00	3	30.8	1	37.5
00:00:00	2	32.5	2	32.5
01:00:00	0	N/A	N/A	N/A
02:00:00	2	27.5	0	0.0
03:00:00	0	N/A	N/A	N/A
04:00:00	0	N/A	N/A	N/A
05:00:00	4	25.0	0	0.0
06:00:00	10	26.8	5	34.5
07:00:00	33	18.6	14	33.2
08:00:00	20	21.6	7	33.9
09:00:00	17	23.8	5	33.5
10:00:00	26	17.3	4	32.5
11:00:00	27	15.7	8	32.5
12:00:00	23	18.8	12	33.8
13:00:00	35	15.4	10	32.5
14:00:00	48	13.0	11	33.4
15:00:00	42	15.8	11	32.5
16:00:00	41	19.4	10	34.5
17:00:00	23	19.9	5	33.5
18:00:00	25	17.8	4	32.5
19:00:00	8	23.4	2	32.5
20:00:00	5	30.5	2	37.5
21:00:00	11	22.0	5	33.5
22:00:00	5	29.5	3	34.2
23:00:00	1	32.5	1	32.5
00:00:00	1	32.5	1	32.5
01:00:00	1	47.5	1	47.5
02:00:00	1	32.5	1	32.5
03:00:00	0	N/A	N/A	N/A

Summary of Violators
Broadmarston

from Wed-Oct-01-2025-12-00-AM to Sat-Oct-18-2025-10-59-AM

04:00:00	0	N/A	N/A	N/A
05:00:00	2	32.5	1	37.5
06:00:00	2	30.0	1	32.5
07:00:00	9	28.6	3	34.2
08:00:00	17	20.9	9	33.6
09:00:00	21	22.6	5	33.5
10:00:00	20	21.9	4	32.5
11:00:00	34	17.1	5	34.5
12:00:00	24	21.4	6	33.3
13:00:00	19	20.7	3	34.2
14:00:00	19	25.3	7	36.1
15:00:00	19	20.1	4	33.8
16:00:00	31	16.5	6	32.5
17:00:00	24	19.4	8	33.1
18:00:00	10	26.5	2	32.5
19:00:00	9	21.4	2	35.0
20:00:00	4	20.6	1	32.5
21:00:00	4	27.5	1	32.5
22:00:00	2	37.5	2	37.5
23:00:00	4	31.3	2	35.0
00:00:00	1	27.5	0	0.0
01:00:00	0	N/A	N/A	N/A
02:00:00	0	N/A	N/A	N/A
03:00:00	2	30.0	1	32.5
04:00:00	1	27.5	0	0.0
05:00:00	1	12.5	0	0.0
06:00:00	2	22.5	0	0.0
07:00:00	11	21.4	6	34.2
08:00:00	14	16.4	1	32.5
09:00:00	19	20.9	10	33.5
10:00:00	20	19.3	8	32.5
11:00:00	22	17.5	8	32.5
12:00:00	36	16.6	6	33.3
13:00:00	17	20.6	5	32.5
14:00:00	16	24.2	3	32.5
15:00:00	23	20.9	7	33.2
16:00:00	17	25.1	6	34.2
17:00:00	20	20.5	9	32.5
18:00:00	13	24.8	5	35.5
19:00:00	3	29.2	2	32.5
20:00:00	3	20.0	1	32.5
21:00:00	3	29.2	1	32.5
22:00:00	3	32.5	2	37.5
23:00:00	2	37.5	2	37.5
00:00:00	1	27.5	0	0.0
01:00:00	0	N/A	N/A	N/A
02:00:00	0	N/A	N/A	N/A
03:00:00	0	N/A	N/A	N/A
04:00:00	0	N/A	N/A	N/A

Summary of Violators
Broadmarston

from Wed-Oct-01-2025-12-00-AM to Sat-Oct-18-2025-10-59-AM

05:00:00	2	27.5	1	32.5
06:00:00	11	17.0	2	32.5
07:00:00	22	25.0	11	33.9
08:00:00	19	21.2	5	32.5
09:00:00	22	19.0	3	34.2
10:00:00	16	24.1	6	34.2
11:00:00	19	21.7	6	34.2
12:00:00	20	19.6	2	32.5
13:00:00	19	25.3	9	33.6
14:00:00	34	16.5	11	33.4
15:00:00	30	17.9	7	33.2
16:00:00	24	21.7	8	35.0
17:00:00	18	15.1	2	32.5
18:00:00	6	29.2	3	32.5
19:00:00	8	28.8	3	34.2
20:00:00	4	27.5	1	32.5
21:00:00	9	28.3	7	33.9
22:00:00	3	21.7	3	32.5
23:00:00	0	N/A	N/A	N/A
00:00:00	0	N/A	N/A	N/A
01:00:00	0	N/A	N/A	N/A
02:00:00	2	13.8	0	0.0
03:00:00	1	22.5	0	0.0
04:00:00	2	17.5	0	0.0
05:00:00	6	20.4	0	0.0
06:00:00	14	18.4	6	32.5
07:00:00	29	18.2	11	33.0
08:00:00	32	16.6	5	33.5
09:00:00	18	18.5	1	32.5
10:00:00	16	20.9	2	35.0
11:00:00	24	18.0	5	33.5
12:00:00	21	27.6	10	33.5
13:00:00	21	25.6	10	35.5
14:00:00	45	13.6	11	32.5
15:00:00	36	16.6	12	33.3
16:00:00	31	16.3	10	33.5
17:00:00	17	23.5	7	32.5
18:00:00	15	24.5	5	33.5
19:00:00	9	28.3	5	35.5
20:00:00	2	25.0	0	0.0
21:00:00	6	25.4	4	32.5
22:00:00	2	30.0	1	32.5
23:00:00	2	30.0	1	32.5
00:00:00	0	N/A	N/A	N/A
01:00:00	0	N/A	N/A	N/A
02:00:00	1	32.5	1	32.5
03:00:00	1	37.5	1	37.5
04:00:00	2	25.0	1	42.5
05:00:00	4	30.0	2	32.5

Summary of Violators
Broadmarston

from Wed-Oct-01-2025-12-00-AM to Sat-Oct-18-2025-10-59-AM

06:00:00	16	16.3	3	32.5
07:00:00	32	15.6	7	33.2
08:00:00	35	14.7	5	32.5
09:00:00	16	19.5	4	36.3
10:00:00	18	19.9	5	32.5
11:00:00	27	13.5	2	37.5
12:00:00	23	22.7	6	33.3
13:00:00	33	17.1	8	32.5
14:00:00	44	15.9	12	32.9
15:00:00	36	20.0	10	34.5
16:00:00	22	18.8	9	34.2
17:00:00	30	16.0	8	33.1
18:00:00	13	25.2	5	34.5
19:00:00	3	18.3	0	0.0
20:00:00	5	28.5	2	35.0
21:00:00	9	21.9	4	32.5
22:00:00	1	32.5	1	32.5
23:00:00	0	N/A	N/A	N/A
00:00:00	1	27.5	0	0.0
01:00:00	0	N/A	N/A	N/A
02:00:00	1	27.5	0	0.0
03:00:00	0	N/A	N/A	N/A
04:00:00	0	N/A	N/A	N/A
05:00:00	4	27.5	1	32.5
06:00:00	6	27.5	3	34.2
07:00:00	36	16.7	6	33.3
08:00:00	24	20.4	10	33.5
09:00:00	23	20.9	6	32.5
10:00:00	20	22.8	5	34.5
11:00:00	31	19.8	8	34.4
12:00:00	22	16.6	4	32.5
13:00:00	33	20.4	11	33.4
14:00:00	37	18.9	12	33.3
15:00:00	36	17.6	8	33.1
16:00:00	29	19.5	10	34.0
17:00:00	21	22.4	4	33.8
18:00:00	5	27.5	1	32.5
19:00:00	5	31.5	3	34.2
20:00:00	4	32.5	3	34.2
21:00:00	6	30.8	3	34.2
22:00:00	0	N/A	N/A	N/A
23:00:00	1	37.5	1	37.5
00:00:00	0	N/A	N/A	N/A
01:00:00	0	N/A	N/A	N/A
02:00:00	1	32.5	1	32.5
03:00:00	0	N/A	N/A	N/A
04:00:00	0	N/A	N/A	N/A
05:00:00	8	26.3	3	32.5
06:00:00	15	18.3	2	35.0

Summary of Violators
Broadmarston

from Wed-Oct-01-2025-12-00-AM to Sat-Oct-18-2025-10-59-AM

07:00:00	28	21.8	17	33.4
08:00:00	27	22.4	10	33.0
09:00:00	24	20.9	8	35.0
10:00:00	21	17.4	4	32.5
11:00:00	28	19.3	9	33.6
12:00:00	19	21.7	5	32.5
13:00:00	23	21.6	8	35.0
14:00:00	39	14.3	9	33.6
15:00:00	34	20.1	14	34.6
16:00:00	26	16.3	6	33.3
17:00:00	27	19.3	11	33.9
18:00:00	17	18.1	4	32.5
19:00:00	9	27.5	4	36.3
20:00:00	4	20.6	1	32.5
21:00:00	6	32.5	4	35.0
22:00:00	2	30.0	1	32.5
23:00:00	0	N/A	N/A	N/A

Incoming Histogram

Broadmarston

from Wed-Oct-01-2025-12-00-AM to Sat-Oct-18-2025-10-59-AM

Date	Starting Hr:min	<15	15 to <20	20 to <25	25 to <30	30 to <35	35 to <40	40 to <45	45 to <50	50 to <55	55 to <60	60 to <65	65 to <70	70 to <75	75 to <80	80 to <85	85 to <90	90 to <95	95 to <100	100 to >105	Total Counts	Avg Speed (MPH)	85pet Speed	10MPH Pace	% in pace	# of Speeders	% Speeders	
01/10/2025	00:00	0	0	0	0	1	0	0	0	0	0	0	0	0	0	0	0	0	0	0	0	1	32	35	25 to 35	100.0	1	100.0
01/10/2025	01:00	0	0	0	0	0	0	0	0	0	0	0	0	0	0	0	0	0	0	0	0	0	0	0	*	*	*	*
01/10/2025	02:00	0	0	0	1	0	0	0	0	0	0	0	0	0	0	0	0	0	0	0	0	1	27	30	20 to 30	100.0	*	*
01/10/2025	03:00	0	0	0	0	0	0	1	0	0	0	0	0	0	0	0	0	0	0	0	0	1	42	45	35 to 45	100.0	1	100.0
01/10/2025	04:00	0	0	0	2	0	0	1	0	0	0	0	0	0	0	0	0	0	0	0	0	3	32.3	45	20 to 30	66.7	1	33.3
01/10/2025	05:00	0	0	1	4	0	0	0	0	0	0	0	0	0	0	0	0	0	0	0	0	5	26.2	28.8	20 to 30	100.0	*	*
01/10/2025	06:00	0	0	3	7	1	1	0	0	0	0	0	0	0	0	0	0	0	0	0	0	12	27.3	30	20 to 30	83.3	2	16.7
01/10/2025	07:00	0	2	6	11	10	1	0	0	0	0	0	0	0	0	0	0	0	0	0	0	30	27.7	33.5	25 to 35	70.0	11	36.7
01/10/2025	08:00	0	1	2	14	4	1	0	0	0	0	0	0	0	0	0	0	0	0	0	0	22	27.7	32.5	25 to 35	81.8	5	22.7
01/10/2025	09:00	0	0	7	8	7	3	0	0	0	0	0	0	0	0	0	0	0	0	0	0	25	28.4	34.3	20 to 30	60.0	10	40.0
01/10/2025	10:00	0	0	3	6	5	0	0	0	0	0	0	0	0	0	0	0	0	0	0	0	14	27.7	33	25 to 35	78.6	5	35.7
01/10/2025	11:00	0	0	5	11	6	0	0	0	0	0	0	0	0	0	0	0	0	0	0	0	22	27.4	32.5	25 to 35	77.3	6	27.3
01/10/2025	12:00	0	2	4	13	6	1	0	0	0	0	0	0	0	0	0	0	0	0	0	0	26	27.3	32.5	25 to 35	73.1	7	26.9
01/10/2025	13:00	0	1	4	12	6	1	0	0	0	0	0	0	0	0	0	0	0	0	0	0	24	27.5	32.5	25 to 35	75.0	7	29.2
01/10/2025	14:00	0	3	8	17	8	1	0	0	0	0	0	0	0	0	0	0	0	0	0	0	37	26.8	31.9	20 to 30	67.6	9	24.3
01/10/2025	15:00	2	5	8	18	11	0	0	0	0	0	0	0	0	0	0	0	0	0	0	0	44	25.9	31.8	25 to 35	65.9	11	25.0
01/10/2025	16:00	0	0	3	9	9	0	0	0	0	0	0	0	0	0	0	0	0	0	0	0	21	28.6	33.3	25 to 35	85.7	9	42.9
01/10/2025	17:00	0	0	2	5	7	0	0	0	0	0	0	0	0	0	0	0	0	0	0	0	14	28.9	33.6	25 to 35	85.7	7	50.0
01/10/2025	18:00	0	1	6	7	2	0	0	0	0	0	0	0	0	0	0	0	0	0	0	0	16	25.3	30	20 to 30	81.3	2	12.5
01/10/2025	19:00	0	0	0	3	2	2	1	0	0	0	0	0	0	0	0	0	0	0	0	0	8	32.6	40	25 to 35	62.5	5	62.5
01/10/2025	20:00	0	0	1	1	2	0	0	0	0	0	0	0	0	0	0	0	0	0	0	0	4	28.3	32.5	25 to 35	75.0	2	50.0
01/10/2025	21:00	0	0	0	1	1	1	0	0	0	0	0	0	0	0	0	0	0	0	0	0	3	32	40	25 to 35	66.7	2	66.7
01/10/2025	22:00	0	0	2	1	0	1	0	0	0	0	0	0	0	0	0	0	0	0	0	0	4	27.3	30	20 to 30	75.0	1	25.0
01/10/2025	23:00	0	0	0	0	2	0	0	0	0	0	0	0	0	0	0	0	0	0	0	0	2	32	35	25 to 35	100.0	2	100.0
24 Hr Summary		2	15	65	151	90	13	3	0	0	0	0	0	0	0	0	0	0	0	0	339	27.6	33.1	25 to 35	71.1	106	31.3	

Incoming Histogram

Broadmarston

from Wed-Oct-01-2025-12-00-AM to Sat-Oct-18-2025-10-59-AM

Date	Starting Hr:min	<15	15 to <20	20 to <25	25 to <30	30 to <35	35 to <40	40 to <45	45 to <50	50 to <55	55 to <60	60 to <65	65 to <70	70 to <75	75 to <80	80 to <85	85 to <90	90 to <95	95 to <100	100 to >105	Total Counts	Avg Speed (MPH)	85pet Speed	10MPH Pace	% in pace	# of Speeders	% Speeders	
02/10/2025	00:00	0	0	0	0	0	0	0	0	0	0	0	0	0	0	0	0	0	0	0	0	0	0	*	*	*	*	
02/10/2025	01:00	0	0	1	1	2	0	0	0	0	0	0	0	0	0	0	0	0	0	0	0	4	28.5	32.5	25 to 35	75.0	2	50.0
02/10/2025	02:00	0	0	0	1	1	1	0	0	0	0	0	0	0	0	0	0	0	0	0	0	3	32	40	25 to 35	66.7	2	66.7
02/10/2025	03:00	0	0	0	0	0	0	0	0	0	0	0	0	0	0	0	0	0	0	0	0	0	0	0	*	*	*	*
02/10/2025	04:00	0	0	0	1	0	0	0	0	0	0	0	0	0	0	0	0	0	0	0	0	1	27	30	20 to 30	100.0	*	*
02/10/2025	05:00	0	2	0	0	1	0	0	0	0	0	0	0	0	0	0	0	0	0	0	0	3	22	35	10 to 20	66.7	1	33.3
02/10/2025	06:00	0	0	5	1	4	2	0	0	0	0	0	0	0	0	0	0	0	0	0	0	12	28.4	35	20 to 30	50.0	6	50.0
02/10/2025	07:00	2	4	7	12	7	1	0	0	0	0	0	0	0	0	0	0	0	0	0	0	33	25.4	32.1	20 to 30	57.6	8	24.2
02/10/2025	08:00	1	2	3	9	1	1	0	0	0	0	0	0	0	0	0	0	0	0	0	0	17	25.1	29.4	20 to 30	70.6	2	11.8
02/10/2025	09:00	0	0	5	10	1	0	0	0	0	0	0	0	0	0	0	0	0	0	0	0	16	25.9	29.5	20 to 30	93.8	1	6.3
02/10/2025	10:00	2	1	5	4	9	0	0	0	0	0	0	0	0	0	0	0	0	0	0	0	21	26.1	33.3	25 to 35	61.9	9	42.9
02/10/2025	11:00	4	1	3	9	6	1	0	0	0	0	0	0	0	0	0	0	0	0	0	0	24	25.1	32.5	25 to 35	62.5	7	29.2
02/10/2025	12:00	0	1	4	12	0	3	0	0	0	0	0	0	0	0	0	0	0	0	0	0	20	27.3	30	20 to 30	80.0	3	15.0
02/10/2025	13:00	0	1	6	10	5	0	0	0	0	0	0	0	0	0	0	0	0	0	0	0	22	26.6	32	20 to 30	72.7	5	22.7
02/10/2025	14:00	1	0	5	11	16	0	0	0	0	0	0	0	0	0	0	0	0	0	0	0	33	28.3	33.4	25 to 35	81.8	16	48.5
02/10/2025	15:00	0	2	10	17	10	2	0	0	0	0	0	0	0	0	0	0	0	0	0	0	41	27.3	33	20 to 30	65.9	12	29.3
02/10/2025	16:00	0	1	12	12	8	1	0	0	0	0	0	0	0	0	0	0	0	0	0	0	34	26.7	32.5	20 to 30	70.6	9	26.5
02/10/2025	17:00	0	0	2	7	7	0	1	0	0	0	0	0	0	0	0	0	0	0	0	0	17	29.5	33.6	25 to 35	82.4	8	47.1
02/10/2025	18:00	1	0	7	5	7	0	1	0	0	0	0	0	0	0	0	0	0	0	0	0	21	27.2	33.6	20 to 30	57.1	8	38.1
02/10/2025	19:00	0	0	1	6	3	1	0	0	0	0	0	0	0	0	0	0	0	0	0	0	11	29	33.3	25 to 35	81.8	4	36.4
02/10/2025	20:00	0	0	1	2	0	0	0	0	0	0	0	0	0	0	0	0	0	0	0	0	3	25.3	30	20 to 30	100.0	*	*
02/10/2025	21:00	0	0	0	4	6	0	0	0	0	0	0	0	0	0	0	0	0	0	0	0	10	30.2	33.3	25 to 35	100.0	6	60.0
02/10/2025	22:00	0	0	0	0	0	0	0	0	0	0	0	0	0	0	0	0	0	0	0	0	0	0	0	*	*	*	*
02/10/2025	23:00	0	0	0	1	0	0	0	0	0	0	0	0	0	0	0	0	0	0	0	0	1	27	30	20 to 30	100.0	*	*
24 Hr Summary		11	15	77	135	94	13	2	0	0	0	0	0	0	0	0	0	0	0	0	347	27	33	25 to 35	66.0	109	31.4	

Incoming Histogram

Broadmarston

from Wed-Oct-01-2025-12-00-AM to Sat-Oct-18-2025-10-59-AM

Date	Starting Hr:min	<15	15 to <20	20 to <25	25 to <30	30 to <35	35 to <40	40 to <45	45 to <50	50 to <55	55 to <60	60 to <65	65 to <70	70 to <75	75 to <80	80 to <85	85 to <90	90 to <95	95 to <100	100 to >105	Total Counts	Avg Speed (MPH)	85pet Speed	10MPH Pace	% in pace	# of Speeders	% Speeders	
03/10/2025	00:00	0	0	0	1	0	0	0	0	0	0	0	0	0	0	0	0	0	0	0	0	1	27	30	20 to 30	100.0	*	*
03/10/2025	01:00	0	0	0	0	2	0	0	0	0	0	0	0	0	0	0	0	0	0	0	0	2	32.5	35	25 to 35	100.0	2	100.0
03/10/2025	02:00	0	0	0	0	1	0	0	0	0	0	0	0	0	0	0	0	0	0	0	0	1	32	35	25 to 35	100.0	1	100.0
03/10/2025	03:00	0	0	0	0	0	0	0	0	0	0	0	0	0	0	0	0	0	0	0	0	0	0	0	*	*	*	*
03/10/2025	04:00	1	0	0	0	0	0	0	0	0	0	0	0	0	0	0	0	0	0	0	0	1	7	10	0 to 10	100.0	*	*
03/10/2025	05:00	0	2	2	0	2	0	0	0	0	0	0	0	0	0	0	0	0	0	0	0	6	24	32.5	15 to 25	66.7	2	33.3
03/10/2025	06:00	0	3	4	4	3	0	0	0	0	0	0	0	0	0	0	0	0	0	0	0	14	24.8	31.7	20 to 30	57.1	3	21.4
03/10/2025	07:00	0	0	3	16	10	0	0	0	0	0	0	0	0	0	0	0	0	0	0	0	29	28.5	33	25 to 35	89.7	10	34.5
03/10/2025	08:00	0	0	5	10	7	1	0	0	0	0	0	0	0	0	0	0	0	0	0	0	23	28.1	33.6	25 to 35	73.9	8	34.8
03/10/2025	09:00	0	0	1	6	6	1	0	0	0	0	0	0	0	0	0	0	0	0	0	0	14	29.6	34.2	25 to 35	85.7	7	50.0
03/10/2025	10:00	0	1	2	5	3	0	0	0	0	0	0	0	0	0	0	0	0	0	0	0	11	26.6	31.7	25 to 35	72.7	3	27.3
03/10/2025	11:00	1	0	4	10	4	0	0	0	0	0	0	0	0	0	0	0	0	0	0	0	19	26.4	31.2	20 to 30	73.7	4	21.1
03/10/2025	12:00	0	0	8	12	5	2	0	0	0	0	0	0	0	0	0	0	0	0	0	0	27	27.6	33	20 to 30	74.1	7	25.9
03/10/2025	13:00	0	0	5	14	7	1	0	0	0	0	0	0	0	0	0	0	0	0	0	0	27	28	32.9	25 to 35	77.8	8	29.6
03/10/2025	14:00	0	0	9	12	7	1	0	0	0	0	0	0	0	0	0	0	0	0	0	0	29	27.2	32.9	20 to 30	72.4	8	27.6
03/10/2025	15:00	1	1	3	14	10	2	0	0	0	0	0	0	0	0	0	0	0	0	0	0	31	28.1	33.5	25 to 35	77.4	12	38.7
03/10/2025	16:00	1	2	6	11	4	0	0	0	0	0	0	0	0	0	0	0	0	0	0	0	24	25.3	30	20 to 30	70.8	4	16.7
03/10/2025	17:00	0	0	4	9	6	3	0	0	0	0	0	0	0	0	0	0	0	0	0	0	22	29.1	35	25 to 35	68.2	9	40.9
03/10/2025	18:00	0	0	6	7	1	0	0	0	0	0	0	0	0	0	0	0	0	0	0	0	14	25.4	29.3	20 to 30	92.9	1	7.1
03/10/2025	19:00	0	0	1	3	1	0	0	0	0	0	0	0	0	0	0	0	0	0	0	0	5	27	30	20 to 30	80.0	1	20.0
03/10/2025	20:00	0	2	1	1	1	0	0	0	0	0	0	0	0	0	0	0	0	0	0	0	5	23.2	30	15 to 25	60.0	1	20.0
03/10/2025	21:00	0	0	3	3	1	0	0	0	0	0	0	0	0	0	0	0	0	0	0	0	7	25.6	30	20 to 30	85.7	1	14.3
03/10/2025	22:00	0	0	0	1	1	0	0	0	0	0	0	0	0	0	0	0	0	0	0	0	2	29.5	35	25 to 35	100.0	1	50.0
03/10/2025	23:00	0	0	1	3	0	0	0	0	0	0	0	0	0	0	0	0	0	0	0	0	4	25.8	28.3	20 to 30	100.0	*	*
24 Hr Summary		4	11	68	142	82	11	0	0	0	0	0	0	0	0	0	0	0	0	0	0	318	27.2	32.7	25 to 35	70.4	93	29.2

Incoming Histogram

Broadmarston

from Wed-Oct-01-2025-12-00-AM to Sat-Oct-18-2025-10-59-AM

Date	Starting Hr:min	<15	15 to <20	20 to <25	25 to <30	30 to <35	35 to <40	40 to <45	45 to <50	50 to <55	55 to <60	60 to <65	65 to <70	70 to <75	75 to <80	80 to <85	85 to <90	90 to <95	95 to <100	100 to >105	Total Counts	Avg Speed (MPH)	85pet Speed	10MPH Pace	% in pace	# of Speeders	% Speeders	
04/10/2025	00:00	0	0	0	0	0	0	0	0	0	0	0	0	0	0	0	0	0	0	0	0	0	0	*	*	*	*	
04/10/2025	01:00	0	0	0	1	0	0	0	0	0	0	0	0	0	0	0	0	0	0	0	0	1	27	30	20 to 30	100.0	*	*
04/10/2025	02:00	0	0	0	2	0	0	0	0	0	0	0	0	0	0	0	0	0	0	0	0	2	27	30	20 to 30	100.0	*	*
04/10/2025	03:00	0	0	0	0	0	0	0	0	0	0	0	0	0	0	0	0	0	0	0	0	0	0	0	*	*	*	*
04/10/2025	04:00	0	0	0	0	0	0	0	0	0	0	0	0	0	0	0	0	0	0	0	0	0	0	0	*	*	*	*
04/10/2025	05:00	0	2	0	1	1	0	0	0	0	0	0	0	0	0	0	0	0	0	0	0	4	23.5	30	10 to 20	50.0	1	25.0
04/10/2025	06:00	0	1	1	1	5	0	0	0	0	0	0	0	0	0	0	0	0	0	0	0	8	28.3	34	25 to 35	75.0	5	62.5
04/10/2025	07:00	0	0	2	8	4	0	0	0	0	0	0	0	0	0	0	0	0	0	0	0	14	27.9	32.5	25 to 35	85.7	4	28.6
04/10/2025	08:00	0	0	4	7	4	0	0	0	0	0	0	0	0	0	0	0	0	0	0	0	15	27.1	32.5	20 to 30	73.3	4	26.7
04/10/2025	09:00	0	1	5	7	5	2	0	0	0	0	0	0	0	0	0	0	0	0	0	0	20	27.8	34	20 to 30	60.0	7	35.0
04/10/2025	10:00	3	1	6	16	3	0	0	0	0	0	0	0	0	0	0	0	0	0	0	0	29	24.8	29.7	20 to 30	75.9	3	10.3
04/10/2025	11:00	0	0	1	8	6	1	0	0	0	0	0	0	0	0	0	0	0	0	0	0	16	29.4	34.2	25 to 35	87.5	7	43.8
04/10/2025	12:00	1	1	4	7	6	0	0	0	0	0	0	0	0	0	0	0	0	0	0	0	19	26.4	32.5	25 to 35	68.4	6	31.6
04/10/2025	13:00	0	1	10	11	5	0	0	0	0	0	0	0	0	0	0	0	0	0	0	0	27	25.9	31	20 to 30	77.8	5	18.5
04/10/2025	14:00	0	1	1	7	4	1	0	0	0	0	0	0	0	0	0	0	0	0	0	0	14	28.2	33.8	25 to 35	78.6	5	35.7
04/10/2025	15:00	0	3	6	8	2	0	1	0	0	0	0	0	0	0	0	0	0	0	0	0	20	25.5	30	20 to 30	70.0	3	15.0
04/10/2025	16:00	0	1	6	16	9	1	0	0	0	0	0	0	0	0	0	0	0	0	0	0	33	27.7	32.8	25 to 35	75.8	10	30.3
04/10/2025	17:00	0	0	8	6	2	2	0	0	0	0	0	0	0	0	0	0	0	0	0	0	18	26.7	32.5	20 to 30	77.8	4	22.2
04/10/2025	18:00	0	1	2	3	1	3	0	0	0	0	0	0	0	0	0	0	0	0	0	0	10	28.5	36.7	20 to 30	50.0	4	40.0
04/10/2025	19:00	0	1	1	1	2	0	0	0	0	0	0	0	0	0	0	0	0	0	0	0	5	26	32.5	25 to 35	60.0	2	40.0
04/10/2025	20:00	0	0	0	2	1	1	0	0	0	0	0	0	0	0	0	0	0	0	0	0	4	31	35	25 to 35	75.0	2	50.0
04/10/2025	21:00	0	0	2	1	1	0	0	0	0	0	0	0	0	0	0	0	0	0	0	0	4	26	30	20 to 30	75.0	1	25.0
04/10/2025	22:00	0	0	0	0	1	0	0	0	0	0	0	0	0	0	0	0	0	0	0	0	1	32	35	25 to 35	100.0	1	100.0
04/10/2025	23:00	0	0	0	0	0	0	0	0	0	0	0	0	0	0	0	0	0	0	0	0	0	0	0	*	*	*	*
24 Hr Summary		4	14	59	113	62	11	1	0	0	0	0	0	0	0	0	0	0	0	0	0	264	27	32.7	25 to 35	66.3	74	28.0

Incoming Histogram

Broadmarston

from Wed-Oct-01-2025-12-00-AM to Sat-Oct-18-2025-10-59-AM

Date	Starting Hr:min	<15	15 to <20	20 to <25	25 to <30	30 to <35	35 to <40	40 to <45	45 to <50	50 to <55	55 to <60	60 to <65	65 to <70	70 to <75	75 to <80	80 to <85	85 to <90	90 to <95	95 to <100	100 to >105	Total Counts	Avg Speed (MPH)	85pet Speed	10MPH Pace	% in pace	# of Speeders	% Speeders	
05/10/2025	00:00	0	0	1	2	0	0	0	0	0	0	0	0	0	0	0	0	0	0	0	0	3	25.3	30	20 to 30	100.0	*	*
05/10/2025	01:00	0	0	1	1	0	0	0	0	0	0	0	0	0	0	0	0	0	0	0	0	2	24.5	30	20 to 30	100.0	*	*
05/10/2025	02:00	0	0	0	0	1	0	0	0	0	0	0	0	0	0	0	0	0	0	0	0	1	32	35	25 to 35	100.0	1	100.0
05/10/2025	03:00	0	0	0	0	0	0	0	0	0	0	0	0	0	0	0	0	0	0	0	0	0	0	0	*	*	*	*
05/10/2025	04:00	1	0	0	0	0	0	0	0	0	0	0	0	0	0	0	0	0	0	0	0	1	12	15	5 to 15	100.0	*	*
05/10/2025	05:00	0	0	0	1	2	0	0	0	0	0	0	0	0	0	0	0	0	0	0	0	3	30.3	35	25 to 35	100.0	2	66.7
05/10/2025	06:00	0	0	0	1	0	1	0	0	0	0	0	0	0	0	0	0	0	0	0	0	2	32	40	20 to 30	50.0	1	50.0
05/10/2025	07:00	1	0	0	4	1	0	0	0	0	0	0	0	0	0	0	0	0	0	0	0	6	25.5	30	25 to 35	83.3	1	16.7
05/10/2025	08:00	1	4	5	4	5	0	0	0	0	0	0	0	0	0	0	0	0	0	0	0	19	24.3	32	15 to 25	47.4	5	26.3
05/10/2025	09:00	2	1	4	9	8	0	0	0	0	0	0	0	0	0	0	0	0	0	0	0	24	26.4	32.5	25 to 35	70.8	8	33.3
05/10/2025	10:00	1	1	2	2	6	2	0	0	0	0	0	0	0	0	0	0	0	0	0	0	14	28.1	35	25 to 35	57.1	8	57.1
05/10/2025	11:00	1	2	4	7	7	0	0	0	0	0	0	0	0	0	0	0	0	0	0	0	21	26.2	32.9	25 to 35	66.7	7	33.3
05/10/2025	12:00	1	0	5	15	4	1	0	0	0	0	0	0	0	0	0	0	0	0	0	0	26	26.9	31.2	20 to 30	76.9	5	19.2
05/10/2025	13:00	1	0	0	11	5	0	0	0	0	0	0	0	0	0	0	0	0	0	0	0	17	27.9	32	25 to 35	94.1	5	29.4
05/10/2025	14:00	1	4	2	11	8	1	1	0	0	0	0	0	0	0	0	0	0	0	0	0	28	27.3	33.8	25 to 35	67.9	10	35.7
05/10/2025	15:00	1	1	5	6	6	0	0	0	0	0	0	0	0	0	0	0	0	0	0	0	19	26.3	32.5	25 to 35	63.2	6	31.6
05/10/2025	16:00	0	0	0	5	6	1	0	0	0	0	0	0	0	0	0	0	0	0	0	0	12	30.4	34.2	25 to 35	91.7	7	58.3
05/10/2025	17:00	0	0	0	3	4	0	0	0	0	0	0	0	0	0	0	0	0	0	0	0	7	30	33.8	25 to 35	100.0	4	57.1
05/10/2025	18:00	0	1	2	5	2	0	0	0	0	0	0	0	0	0	0	0	0	0	0	0	10	26.1	30	20 to 30	70.0	2	20.0
05/10/2025	19:00	0	0	0	2	2	1	0	0	0	0	0	0	0	0	0	0	0	0	0	0	5	31.2	35	25 to 35	80.0	3	60.0
05/10/2025	20:00	0	0	0	0	1	0	0	0	0	0	0	0	0	0	0	0	0	0	0	0	1	32	35	25 to 35	100.0	1	100.0
05/10/2025	21:00	0	0	0	0	0	0	1	0	0	0	0	0	0	0	0	0	0	0	0	0	1	42	45	35 to 45	100.0	1	100.0
05/10/2025	22:00	0	0	0	0	0	0	0	0	0	0	0	0	0	0	0	0	0	0	0	0	0	0	0	*	*	*	*
05/10/2025	23:00	0	0	1	0	1	0	0	0	0	0	0	0	0	0	0	0	0	0	0	0	2	27	35	15 to 25	50.0	1	50.0
24 Hr Summary		11	14	32	89	69	7	2	0	0	0	0	0	0	0	0	0	0	0	0	0	224	27.1	33.2	25 to 35	70.5	78	34.8

Incoming Histogram

Broadmarston

from Wed-Oct-01-2025-12-00-AM to Sat-Oct-18-2025-10-59-AM

Date	Starting Hr:min	<15	15 to <20	20 to <25	25 to <30	30 to <35	35 to <40	40 to <45	45 to <50	50 to <55	55 to <60	60 to <65	65 to <70	70 to <75	75 to <80	80 to <85	85 to <90	90 to <95	95 to <100	100 to >105	Total Counts	Avg Speed (MPH)	85pet Speed	10MPH Pace	% in pace	# of Speeders	% Speeders	
06/10/2025	00:00	0	0	0	1	1	1	0	0	0	0	0	0	0	0	0	0	0	0	0	0	3	32	40	25 to 35	66.7	2	66.7
06/10/2025	01:00	0	0	1	0	0	0	0	0	0	0	0	0	0	0	0	0	0	0	0	0	1	22	25	15 to 25	100.0	*	*
06/10/2025	02:00	0	0	1	0	0	0	0	0	0	0	0	0	0	0	0	0	0	0	0	0	1	22	25	15 to 25	100.0	*	*
06/10/2025	03:00	0	0	0	0	0	0	0	0	0	0	0	0	0	0	0	0	0	0	0	0	0	0	0	*	*	*	*
06/10/2025	04:00	1	0	0	0	0	0	0	0	0	0	0	0	0	0	0	0	0	0	0	0	1	7	10	0 to 10	100.0	*	*
06/10/2025	05:00	1	2	0	2	3	0	0	0	0	0	0	0	0	0	0	0	0	0	0	0	8	24.6	33.3	25 to 35	62.5	3	37.5
06/10/2025	06:00	0	3	5	10	3	1	0	0	0	0	0	0	0	0	0	0	0	0	0	0	22	25.9	31.7	20 to 30	68.2	4	18.2
06/10/2025	07:00	1	1	4	14	12	4	0	0	0	0	0	0	0	0	0	0	0	0	0	0	36	28.8	34.6	25 to 35	72.2	16	44.4
06/10/2025	08:00	1	1	2	8	3	3	0	0	0	0	0	0	0	0	0	0	0	0	0	0	18	27.7	35	25 to 35	61.1	6	33.3
06/10/2025	09:00	1	0	3	9	3	1	0	0	0	0	0	0	0	0	0	0	0	0	0	0	17	26.9	31.7	20 to 30	70.6	4	23.5
06/10/2025	10:00	0	0	3	10	6	1	0	0	0	0	0	0	0	0	0	0	0	0	0	0	20	28.5	33.3	25 to 35	80.0	7	35.0
06/10/2025	11:00	1	0	2	10	4	0	0	0	0	0	0	0	0	0	0	0	0	0	0	0	17	26.9	31.2	25 to 35	82.4	4	23.5
06/10/2025	12:00	1	1	2	10	3	1	0	0	0	0	0	0	0	0	0	0	0	0	0	0	18	26.6	31.7	25 to 35	72.2	4	22.2
06/10/2025	13:00	0	6	1	11	9	1	0	0	0	0	0	0	0	0	0	0	0	0	0	0	28	26.9	33.3	25 to 35	71.4	10	35.7
06/10/2025	14:00	0	2	7	12	8	1	0	0	0	0	0	0	0	0	0	0	0	0	0	0	30	27.1	33.1	25 to 35	66.7	9	30.0
06/10/2025	15:00	2	2	3	8	15	3	0	0	0	0	0	0	0	0	0	0	0	0	0	0	33	28.4	34.3	25 to 35	69.7	18	54.5
06/10/2025	16:00	0	0	10	16	16	3	0	0	0	0	0	0	0	0	0	0	0	0	0	0	45	28.7	33.8	25 to 35	71.1	19	42.2
06/10/2025	17:00	0	1	3	9	5	0	0	0	0	0	0	0	0	0	0	0	0	0	0	0	18	27.2	32	25 to 35	77.8	5	27.8
06/10/2025	18:00	0	0	4	5	5	1	0	0	0	0	0	0	0	0	0	0	0	0	0	0	15	28.1	34	25 to 35	66.7	6	40.0
06/10/2025	19:00	0	0	1	6	1	1	0	0	0	0	0	0	0	0	0	0	0	0	0	0	9	28.1	35	20 to 30	77.8	2	22.2
06/10/2025	20:00	0	0	0	3	3	1	0	0	0	0	0	0	0	0	0	0	0	0	0	0	7	30.6	35	25 to 35	85.7	4	57.1
06/10/2025	21:00	0	1	1	3	1	1	0	0	0	0	0	0	0	0	0	0	0	0	0	0	7	27	35	20 to 30	57.1	2	28.6
06/10/2025	22:00	0	0	1	0	0	1	0	0	0	0	0	0	0	0	0	0	0	0	0	0	2	29.5	40	15 to 25	50.0	1	50.0
06/10/2025	23:00	0	0	0	0	1	0	0	0	0	0	0	0	0	0	0	0	0	0	0	0	1	32	35	25 to 35	100.0	1	100.0
24 Hr Summary		9	20	54	147	102	25	0	0	0	0	0	0	0	0	0	0	0	0	0	0	357	27.6	33.6	25 to 35	69.7	127	35.6

Incoming Histogram

Broadmarston

from Wed-Oct-01-2025-12-00-AM to Sat-Oct-18-2025-10-59-AM

Date	Starting Hr:min	<15	15 to <20	20 to <25	25 to <30	30 to <35	35 to <40	40 to <45	45 to <50	50 to <55	55 to <60	60 to <65	65 to <70	70 to <75	75 to <80	80 to <85	85 to <90	90 to <95	95 to <100	100 to >105	Total Counts	Avg Speed (MPH)	85pet Speed	10MPH Pace	% in pace	# of Speeders	% Speeders	
07/10/2025	00:00	0	0	0	1	1	0	0	0	0	0	0	0	0	0	0	0	0	0	0	0	2	29.5	35	25 to 35	100.0	1	50.0
07/10/2025	01:00	0	0	0	0	0	0	1	0	0	0	0	0	0	0	0	0	0	0	0	0	1	42	45	35 to 45	100.0	1	100.0
07/10/2025	02:00	0	0	0	0	1	0	0	0	0	0	0	0	0	0	0	0	0	0	0	0	1	32	35	25 to 35	100.0	1	100.0
07/10/2025	03:00	0	0	0	0	0	0	0	0	0	0	0	0	0	0	0	0	0	0	0	0	0	0	0	*	*	*	*
07/10/2025	04:00	1	0	0	1	0	0	0	0	0	0	0	0	0	0	0	0	0	0	0	0	2	17	30	0 to 10	50.0	*	*
07/10/2025	05:00	0	1	0	1	1	0	0	0	0	0	0	0	0	0	0	0	0	0	0	0	3	25.3	35	25 to 35	66.7	1	33.3
07/10/2025	06:00	0	0	2	4	6	1	0	0	0	0	0	0	0	0	0	0	0	0	0	0	13	29.7	34.2	25 to 35	76.9	7	53.8
07/10/2025	07:00	0	0	5	11	7	1	0	0	0	0	0	0	0	0	0	0	0	0	0	0	24	28.2	32.9	25 to 35	75.0	8	33.3
07/10/2025	08:00	2	0	4	11	2	1	0	0	0	0	0	0	0	0	0	0	0	0	0	0	20	25.4	30	20 to 30	75.0	3	15.0
07/10/2025	09:00	1	0	4	9	4	1	0	0	0	0	0	0	0	0	0	0	0	0	0	0	19	26.8	32.5	20 to 30	68.4	5	26.3
07/10/2025	10:00	5	5	2	5	2	0	0	0	0	0	0	0	0	0	0	0	0	0	0	0	19	20.6	29	10 to 20	52.6	2	10.5
07/10/2025	11:00	5	7	6	7	0	0	0	0	0	0	0	0	0	0	0	0	0	0	0	0	25	20	27.1	15 to 25	52.0	*	*
07/10/2025	12:00	5	1	4	7	1	0	0	0	0	0	0	0	0	0	0	0	0	0	0	0	18	21.1	28.6	20 to 30	61.1	1	5.6
07/10/2025	13:00	1	4	8	10	4	0	0	0	0	0	0	0	0	0	0	0	0	0	0	0	27	24.4	30	20 to 30	66.7	4	14.8
07/10/2025	14:00	1	3	12	17	11	0	0	0	0	0	0	0	0	0	0	0	0	0	0	0	44	26.2	31.8	20 to 30	65.9	11	25.0
07/10/2025	15:00	2	1	5	24	12	1	0	0	0	0	0	0	0	0	0	0	0	0	0	0	45	27.2	32.5	25 to 35	80.0	13	28.9
07/10/2025	16:00	0	2	6	8	9	2	0	0	0	0	0	0	0	0	0	0	0	0	0	0	27	27.8	33.9	25 to 35	63.0	11	40.7
07/10/2025	17:00	0	3	6	9	4	2	0	1	0	0	0	0	0	0	0	0	0	0	0	0	25	27.2	33.8	20 to 30	60.0	7	28.0
07/10/2025	18:00	0	0	5	2	3	1	1	0	0	0	0	0	0	0	0	0	0	0	0	0	12	28.4	35	20 to 30	58.3	5	41.7
07/10/2025	19:00	0	0	1	6	0	0	0	0	0	0	0	0	0	0	0	0	0	0	0	0	7	26.3	29.2	20 to 30	100.0	*	*
07/10/2025	20:00	0	1	0	0	1	0	0	0	0	0	0	0	0	0	0	0	0	0	0	0	2	24.5	35	10 to 20	50.0	1	50.0
07/10/2025	21:00	0	0	1	1	3	0	0	0	0	0	0	0	0	0	0	0	0	0	0	0	5	29	33.3	25 to 35	80.0	3	60.0
07/10/2025	22:00	0	0	0	1	0	1	0	0	0	0	0	0	0	0	0	0	0	0	0	0	2	32	40	20 to 30	50.0	1	50.0
07/10/2025	23:00	0	0	0	0	0	0	0	0	0	0	0	0	0	0	0	0	0	0	0	0	0	0	0	*	*	*	*
24 Hr Summary		23	28	71	135	72	11	2	1	0	0	0	0	0	0	0	0	0	0	0	0	343	25.8	32.4	25 to 35	60.3	86	25.1

Incoming Histogram

Broadmarston

from Wed-Oct-01-2025-12-00-AM to Sat-Oct-18-2025-10-59-AM

Date	Starting Hr:min	<15	15 to <20	20 to <25	25 to <30	30 to <35	35 to <40	40 to <45	45 to <50	50 to <55	55 to <60	60 to <65	65 to <70	70 to <75	75 to <80	80 to <85	85 to <90	90 to <95	95 to <100	100 to >105	Total Counts	Avg Speed (MPH)	85pet Speed	10MPH Pace	% in pace	# of Speeders	% Speeders
08/10/2025	00:00	0	0	0	0	0	0	0	0	0	0	0	0	0	0	0	0	0	0	0	0	0	0	*	*	*	*
08/10/2025	01:00	0	0	0	0	0	0	0	0	0	0	0	0	0	0	0	0	0	0	0	0	0	0	*	*	*	*
08/10/2025	02:00	0	0	0	1	0	0	0	0	0	0	0	0	0	0	0	0	0	0	0	1	27	30	20 to 30	100.0	*	*
08/10/2025	03:00	0	0	0	0	0	0	0	0	0	0	0	0	0	0	0	0	0	0	0	0	0	0	*	*	*	*
08/10/2025	04:00	0	0	1	0	0	1	0	0	0	0	0	0	0	0	0	0	0	0	0	2	29.5	40	15 to 25	50.0	1	50.0
08/10/2025	05:00	0	0	0	3	0	0	0	0	0	0	0	0	0	0	0	0	0	0	0	3	27	30	20 to 30	100.0	*	*
08/10/2025	06:00	0	1	3	6	3	1	0	0	0	0	0	0	0	0	0	0	0	0	0	14	27.1	33.3	20 to 30	64.3	4	28.6
08/10/2025	07:00	0	0	2	16	8	1	0	0	0	0	0	0	0	0	0	0	0	0	0	27	28.8	33.1	25 to 35	88.9	9	33.3
08/10/2025	08:00	1	2	4	10	7	1	0	0	0	0	0	0	0	0	0	0	0	0	0	25	26.8	32.9	25 to 35	68.0	8	32.0
08/10/2025	09:00	2	0	2	17	3	0	0	0	0	0	0	0	0	0	0	0	0	0	0	24	26.2	29.7	25 to 35	83.3	3	12.5
08/10/2025	10:00	1	3	2	11	7	1	0	0	0	0	0	0	0	0	0	0	0	0	0	25	26.7	32.9	25 to 35	72.0	8	32.0
08/10/2025	11:00	1	2	5	10	1	1	0	0	0	0	0	0	0	0	0	0	0	0	0	20	24.9	29.5	20 to 30	75.0	2	10.0
08/10/2025	12:00	0	2	4	6	3	0	0	0	0	0	0	0	0	0	0	0	0	0	0	15	25.5	31.7	20 to 30	66.7	3	20.0
08/10/2025	13:00	0	3	3	12	6	1	0	0	0	0	0	0	0	0	0	0	0	0	0	25	27	32.5	25 to 35	72.0	7	28.0
08/10/2025	14:00	2	0	10	14	9	1	0	0	0	0	0	0	0	0	0	0	0	0	0	36	26.6	32.8	20 to 30	66.7	10	27.8
08/10/2025	15:00	0	2	14	15	14	1	0	0	0	0	0	0	0	0	0	0	0	0	0	46	27.1	32.9	20 to 30	63.0	15	32.6
08/10/2025	16:00	1	0	5	15	4	2	0	0	0	0	0	0	0	0	0	0	0	0	0	27	27.2	32.5	20 to 30	74.1	6	22.2
08/10/2025	17:00	4	0	3	5	7	1	0	0	0	0	0	0	0	0	0	0	0	0	0	20	25.5	33.6	25 to 35	60.0	8	40.0
08/10/2025	18:00	0	1	2	5	4	3	0	0	0	0	0	0	0	0	0	0	0	0	0	15	29.1	36.7	25 to 35	60.0	7	46.7
08/10/2025	19:00	1	2	1	1	0	0	0	0	0	0	0	0	0	0	0	0	0	0	0	5	19.2	25	10 to 20	60.0	*	*
08/10/2025	20:00	0	0	2	1	1	0	0	0	0	0	0	0	0	0	0	0	0	0	0	4	25.8	30	20 to 30	75.0	1	25.0
08/10/2025	21:00	0	0	0	2	1	0	0	0	0	0	0	0	0	0	0	0	0	0	0	3	28.7	35	25 to 35	100.0	1	33.3
08/10/2025	22:00	0	0	0	1	0	0	0	0	0	0	0	0	0	0	0	0	0	0	0	1	27	30	20 to 30	100.0	*	*
08/10/2025	23:00	0	0	0	1	1	0	0	0	0	0	0	0	0	0	0	0	0	0	0	2	29.5	35	25 to 35	100.0	1	50.0
24 Hr Summary		13	18	63	152	79	15	0	0	0	0	0	0	0	0	0	0	0	0	0	340	26.8	32.7	25 to 35	67.9	94	27.6

Incoming Histogram

Broadmarston

from Wed-Oct-01-2025-12-00-AM to Sat-Oct-18-2025-10-59-AM

Date	Starting Hr:min	<15	15 to <20	20 to <25	25 to <30	30 to <35	35 to <40	40 to <45	45 to <50	50 to <55	55 to <60	60 to <65	65 to <70	70 to <75	75 to <80	80 to <85	85 to <90	90 to <95	95 to <100	100 to >105	Total Counts	Avg Speed (MPH)	85pet Speed	10MPH Pace	% in pace	# of Speeders	% Speeders	
09/10/2025	00:00	0	0	0	0	1	0	0	0	0	0	0	0	0	0	0	0	0	0	0	0	1	32	35	25 to 35	100.0	1	100.0
09/10/2025	01:00	0	0	0	0	0	0	0	0	0	0	0	0	0	0	0	0	0	0	0	0	0	0	0	*	*	*	*
09/10/2025	02:00	0	0	1	1	0	0	0	0	0	0	0	0	0	0	0	0	0	0	0	0	2	24.5	30	20 to 30	100.0	*	*
09/10/2025	03:00	0	0	0	0	0	0	0	0	0	0	0	0	0	0	0	0	0	0	0	0	0	0	0	*	*	*	*
09/10/2025	04:00	0	0	1	1	0	0	0	0	0	0	0	0	0	0	0	0	0	0	0	0	2	24.5	30	20 to 30	100.0	*	*
09/10/2025	05:00	0	5	2	3	1	1	0	0	0	0	0	0	0	0	0	0	0	0	0	0	12	23.5	30	15 to 25	58.3	2	16.7
09/10/2025	06:00	3	2	1	2	3	1	0	0	0	0	0	0	0	0	0	0	0	0	0	0	12	23	33.3	25 to 35	41.7	4	33.3
09/10/2025	07:00	0	1	4	16	12	1	0	0	0	0	0	0	0	0	0	0	0	0	0	0	34	28.5	33.3	25 to 35	82.4	13	38.2
09/10/2025	08:00	1	1	4	9	5	1	0	0	0	0	0	0	0	0	0	0	0	0	0	0	21	26.7	33	25 to 35	66.7	6	28.6
09/10/2025	09:00	1	1	4	7	4	0	0	0	0	0	0	0	0	0	0	0	0	0	0	0	17	25.8	31.2	20 to 30	64.7	4	23.5
09/10/2025	10:00	5	2	12	11	2	1	0	0	0	0	0	0	0	0	0	0	0	0	0	0	33	22.8	29.1	20 to 30	69.7	3	9.1
09/10/2025	11:00	1	0	4	7	4	3	0	0	0	0	0	0	0	0	0	0	0	0	0	0	19	27.9	35	20 to 30	57.9	7	36.8
09/10/2025	12:00	0	1	2	11	7	0	0	0	0	0	0	0	0	0	0	0	0	0	0	0	21	27.9	32.9	25 to 35	85.7	7	33.3
09/10/2025	13:00	0	1	3	10	10	1	0	0	0	0	0	0	0	0	0	0	0	0	0	0	25	28.7	33.5	25 to 35	80.0	11	44.0
09/10/2025	14:00	1	4	6	15	11	0	0	0	0	0	0	0	0	0	0	0	0	0	0	0	37	26.4	32.3	25 to 35	70.3	11	29.7
09/10/2025	15:00	0	1	10	15	13	1	0	0	0	0	0	0	0	0	0	0	0	0	0	0	40	27.6	33.1	25 to 35	70.0	14	35.0
09/10/2025	16:00	0	4	6	17	7	3	0	0	0	0	0	0	0	0	0	0	0	0	0	0	37	27.1	32.9	25 to 35	64.9	10	27.0
09/10/2025	17:00	0	0	1	10	6	3	0	0	0	0	0	0	0	0	0	0	0	0	0	0	20	30	35	25 to 35	80.0	9	45.0
09/10/2025	18:00	0	0	1	6	1	0	1	0	0	0	0	0	0	0	0	0	0	0	0	0	9	28.8	35	20 to 30	77.8	2	22.2
09/10/2025	19:00	0	0	1	3	2	2	0	0	0	0	0	0	0	0	0	0	0	0	0	0	8	30.3	37.5	25 to 35	62.5	4	50.0
09/10/2025	20:00	0	0	1	2	2	0	0	0	0	0	0	0	0	0	0	0	0	0	0	0	5	28	32.5	25 to 35	80.0	2	40.0
09/10/2025	21:00	0	0	1	5	1	0	0	0	0	0	0	0	0	0	0	0	0	0	0	0	7	27.1	30	20 to 30	85.7	1	14.3
09/10/2025	22:00	0	0	0	2	0	0	0	0	0	0	0	0	0	0	0	0	0	0	0	0	2	27	30	20 to 30	100.0	*	*
09/10/2025	23:00	0	0	0	2	1	1	0	0	0	0	0	0	0	0	0	0	0	0	0	0	4	30.8	35	25 to 35	75.0	2	50.0
24 Hr Summary		12	23	65	155	93	19	1	0	0	0	0	0	0	0	0	0	0	0	0	0	368	27	33.1	25 to 35	67.4	113	30.7

Incoming Histogram

Broadmarston

from Wed-Oct-01-2025-12-00-AM to Sat-Oct-18-2025-10-59-AM

Date	Starting Hr:min	<15	15 to <20	20 to <25	25 to <30	30 to <35	35 to <40	40 to <45	45 to <50	50 to <55	55 to <60	60 to <65	65 to <70	70 to <75	75 to <80	80 to <85	85 to <90	90 to <95	95 to <100	100 to >105	Total Counts	Avg Speed (MPH)	85pet Speed	10MPH Pace	% in pace	# of Speeders	% Speeders	
10/10/2025	00:00	0	0	0	0	1	0	0	0	0	0	0	0	0	0	0	0	0	0	0	0	1	32	35	25 to 35	100.0	1	100.0
10/10/2025	01:00	0	0	0	0	0	0	0	0	0	0	0	0	0	0	0	0	0	0	0	0	0	0	0	*	*	*	*
10/10/2025	02:00	0	0	0	2	0	0	0	0	0	0	0	0	0	0	0	0	0	0	0	0	2	27	30	20 to 30	100.0	*	*
10/10/2025	03:00	0	0	0	0	0	0	0	0	0	0	0	0	0	0	0	0	0	0	0	0	0	0	0	*	*	*	*
10/10/2025	04:00	0	0	0	0	0	0	0	0	0	0	0	0	0	0	0	0	0	0	0	0	0	0	0	*	*	*	*
10/10/2025	05:00	0	1	0	3	0	0	0	0	0	0	0	0	0	0	0	0	0	0	0	0	4	24.5	28.3	20 to 30	75.0	*	*
10/10/2025	06:00	0	1	1	4	3	2	0	0	0	0	0	0	0	0	0	0	0	0	0	0	11	28.9	35	25 to 35	63.6	5	45.5
10/10/2025	07:00	0	1	5	12	14	2	0	0	0	0	0	0	0	0	0	0	0	0	0	0	34	28.9	33.9	25 to 35	76.5	16	47.1
10/10/2025	08:00	0	0	5	9	4	2	0	0	0	0	0	0	0	0	0	0	0	0	0	0	20	28	33.8	20 to 30	70.0	6	30.0
10/10/2025	09:00	0	0	3	10	3	1	0	0	0	0	0	0	0	0	0	0	0	0	0	0	17	27.8	31.7	20 to 30	76.5	4	23.5
10/10/2025	10:00	2	1	8	14	4	0	0	0	0	0	0	0	0	0	0	0	0	0	0	0	29	25	30	20 to 30	75.9	4	13.8
10/10/2025	11:00	0	1	7	6	10	0	0	0	0	0	0	0	0	0	0	0	0	0	0	0	24	27.5	33	25 to 35	66.7	10	41.7
10/10/2025	12:00	1	1	3	10	8	3	0	0	0	0	0	0	0	0	0	0	0	0	0	0	26	28.3	34.4	25 to 35	69.2	11	42.3
10/10/2025	13:00	0	0	3	20	9	0	0	0	0	0	0	0	0	0	0	0	0	0	0	0	32	28.3	32.2	25 to 35	90.6	9	28.1
10/10/2025	14:00	1	4	14	21	9	2	0	0	0	0	0	0	0	0	0	0	0	0	0	0	51	26.1	31.7	20 to 30	68.6	11	21.6
10/10/2025	15:00	0	3	9	18	11	0	0	0	0	0	0	0	0	0	0	0	0	0	0	0	41	26.8	32.3	25 to 35	70.7	11	26.8
10/10/2025	16:00	1	2	13	13	6	4	0	0	0	0	0	0	0	0	0	0	0	0	0	0	39	26.5	33.3	20 to 30	66.7	10	25.6
10/10/2025	17:00	3	3	5	8	6	1	0	0	0	0	0	0	0	0	0	0	0	0	0	0	26	24.7	32.5	25 to 35	53.8	7	26.9
10/10/2025	18:00	0	0	7	12	2	0	0	0	0	0	0	0	0	0	0	0	0	0	0	0	21	26	29.6	20 to 30	90.5	2	9.5
10/10/2025	19:00	0	2	1	2	2	0	0	0	0	0	0	0	0	0	0	0	0	0	0	0	7	25	32.5	25 to 35	57.1	2	28.6
10/10/2025	20:00	0	0	1	2	2	2	0	0	0	0	0	0	0	0	0	0	0	0	0	0	7	30.7	37.5	25 to 35	57.1	4	57.1
10/10/2025	21:00	0	1	3	2	2	1	0	0	0	0	0	0	0	0	0	0	0	0	0	0	9	26.6	35	20 to 30	55.6	3	33.3
10/10/2025	22:00	0	1	0	1	2	1	0	0	0	0	0	0	0	0	0	0	0	0	0	0	5	29	35	25 to 35	60.0	3	60.0
10/10/2025	23:00	0	0	0	0	2	0	0	0	0	0	0	0	0	0	0	0	0	0	0	0	2	32	35	25 to 35	100.0	2	100.0
24 Hr Summary		8	22	88	169	100	21	0	0	0	0	0	0	0	0	0	0	0	0	0	0	408	27	33	25 to 35	65.9	121	29.7

Incoming Histogram

Broadmarston

from Wed-Oct-01-2025-12-00-AM to Sat-Oct-18-2025-10-59-AM

Date	Starting Hr:min	<15	15 to <20	20 to <25	25 to <30	30 to <35	35 to <40	40 to <45	45 to <50	50 to <55	55 to <60	60 to <65	65 to <70	70 to <75	75 to <80	80 to <85	85 to <90	90 to <95	95 to <100	100 to >105	Total Counts	Avg Speed (MPH)	85pet Speed	10MPH Pace	% in pace	# of Speeders	% Speeders	
11/10/2025	00:00	0	0	0	0	0	0	0	0	0	0	0	0	0	0	0	0	0	0	0	0	0	0	*	*	*	*	
11/10/2025	01:00	0	0	0	0	0	0	0	1	0	0	0	0	0	0	0	0	0	0	0	0	1	47	50	40 to 50	100.0	1	100.0
11/10/2025	02:00	0	0	0	0	1	0	0	0	0	0	0	0	0	0	0	0	0	0	0	0	1	32	35	25 to 35	100.0	1	100.0
11/10/2025	03:00	0	0	0	0	0	0	0	0	0	0	0	0	0	0	0	0	0	0	0	0	0	0	0	*	*	*	*
11/10/2025	04:00	0	0	0	0	0	0	0	0	0	0	0	0	0	0	0	0	0	0	0	0	0	0	0	*	*	*	*
11/10/2025	05:00	0	0	0	1	0	1	0	0	0	0	0	0	0	0	0	0	0	0	0	0	2	32	40	20 to 30	50.0	1	50.0
11/10/2025	06:00	0	0	0	1	1	0	0	0	0	0	0	0	0	0	0	0	0	0	0	0	2	29.5	35	25 to 35	100.0	1	50.0
11/10/2025	07:00	0	0	2	4	3	1	0	0	0	0	0	0	0	0	0	0	0	0	0	0	10	28.5	33.3	25 to 35	70.0	4	40.0
11/10/2025	08:00	1	0	4	7	7	2	0	0	0	0	0	0	0	0	0	0	0	0	0	0	21	28.2	34.3	25 to 35	66.7	9	42.9
11/10/2025	09:00	2	1	1	8	3	1	0	0	0	0	0	0	0	0	0	0	0	0	0	0	16	25.8	33.3	25 to 35	68.8	4	25.0
11/10/2025	10:00	2	3	4	11	4	0	0	0	0	0	0	0	0	0	0	0	0	0	0	0	24	24.6	30	20 to 30	62.5	4	16.7
11/10/2025	11:00	1	2	5	17	4	0	1	0	0	0	0	0	0	0	0	0	0	0	0	0	30	26.4	31.2	20 to 30	73.3	5	16.7
11/10/2025	12:00	1	3	8	11	5	1	0	0	0	0	0	0	0	0	0	0	0	0	0	0	29	25.5	32	20 to 30	65.5	6	20.7
11/10/2025	13:00	0	0	4	8	2	1	0	0	0	0	0	0	0	0	0	0	0	0	0	0	15	27.1	32.5	20 to 30	80.0	3	20.0
11/10/2025	14:00	1	0	4	7	3	4	1	0	0	0	0	0	0	0	0	0	0	0	0	0	20	28.9	37.5	20 to 30	55.0	8	40.0
11/10/2025	15:00	1	1	3	10	3	0	0	0	0	0	0	0	0	0	0	0	0	0	0	0	18	25.6	30	20 to 30	72.2	3	16.7
11/10/2025	16:00	1	0	6	19	6	0	0	0	0	0	0	0	0	0	0	0	0	0	0	0	32	26.8	30.8	20 to 30	78.1	6	18.8
11/10/2025	17:00	0	0	2	12	7	1	0	0	0	0	0	0	0	0	0	0	0	0	0	0	22	28.8	33.6	25 to 35	86.4	8	36.4
11/10/2025	18:00	0	0	4	6	3	0	0	0	0	0	0	0	0	0	0	0	0	0	0	0	13	26.7	31.7	20 to 30	76.9	3	23.1
11/10/2025	19:00	0	0	6	1	0	1	0	0	0	0	0	0	0	0	0	0	0	0	0	0	8	24.8	30	20 to 30	87.5	1	12.5
11/10/2025	20:00	0	0	0	1	1	0	0	0	0	0	0	0	0	0	0	0	0	0	0	0	2	29.5	35	25 to 35	100.0	1	50.0
11/10/2025	21:00	0	0	1	2	1	0	0	0	0	0	0	0	0	0	0	0	0	0	0	0	4	27	30	20 to 30	75.0	1	25.0
11/10/2025	22:00	0	0	0	0	0	2	0	0	0	0	0	0	0	0	0	0	0	0	0	0	2	37	40	30 to 40	100.0	2	100.0
11/10/2025	23:00	0	0	0	2	1	1	0	0	0	0	0	0	0	0	0	0	0	0	0	0	4	30.8	35	25 to 35	75.0	2	50.0
24 Hr Summary		10	10	54	128	55	16	2	1	0	0	0	0	0	0	0	0	0	0	0	0	276	27	33	25 to 35	66.3	74	26.8

Incoming Histogram

Broadmarston

from Wed-Oct-01-2025-12-00-AM to Sat-Oct-18-2025-10-59-AM

Date	Starting Hr:min	<15	15 to <20	20 to <25	25 to <30	30 to <35	35 to <40	40 to <45	45 to <50	50 to <55	55 to <60	60 to <65	65 to <70	70 to <75	75 to <80	80 to <85	85 to <90	90 to <95	95 to <100	100 to >105	Total Counts	Avg Speed (MPH)	85pet Speed	10MPH Pace	% in pace	# of Speeders	% Speeders	
12/10/2025	00:00	0	0	0	1	0	0	0	0	0	0	0	0	0	0	0	0	0	0	0	0	1	27	30	20 to 30	100.0	*	*
12/10/2025	01:00	0	0	0	0	0	0	0	0	0	0	0	0	0	0	0	0	0	0	0	0	0	0	0	*	*	*	*
12/10/2025	02:00	0	0	0	1	1	0	0	0	0	0	0	0	0	0	0	0	0	0	0	0	2	29.5	35	25 to 35	100.0	1	50.0
12/10/2025	03:00	0	0	0	1	0	0	0	0	0	0	0	0	0	0	0	0	0	0	0	0	1	27	30	20 to 30	100.0	*	*
12/10/2025	04:00	1	0	0	0	0	0	0	0	0	0	0	0	0	0	0	0	0	0	0	0	1	12	15	5 to 15	100.0	*	*
12/10/2025	05:00	0	0	1	0	0	0	0	0	0	0	0	0	0	0	0	0	0	0	0	0	1	22	25	15 to 25	100.0	*	*
12/10/2025	06:00	0	0	1	0	0	1	0	0	0	0	0	0	0	0	0	0	0	0	0	0	2	29.5	40	15 to 25	50.0	1	50.0
12/10/2025	07:00	1	0	1	4	4	1	0	0	0	0	0	0	0	0	0	0	0	0	0	0	11	28.1	33.8	25 to 35	72.7	5	45.5
12/10/2025	08:00	5	0	4	3	1	0	0	0	0	0	0	0	0	0	0	0	0	0	0	0	13	19.9	28.3	20 to 30	53.8	1	7.7
12/10/2025	09:00	3	1	1	5	8	2	0	0	0	0	0	0	0	0	0	0	0	0	0	0	20	27.2	34.4	25 to 35	65.0	10	50.0
12/10/2025	10:00	1	0	2	10	8	0	0	0	0	0	0	0	0	0	0	0	0	0	0	0	21	28	33.1	25 to 35	85.7	8	38.1
12/10/2025	11:00	1	0	4	7	8	0	0	0	0	0	0	0	0	0	0	0	0	0	0	0	20	27.5	33.1	25 to 35	75.0	8	40.0
12/10/2025	12:00	1	3	10	17	6	1	0	0	0	0	0	0	0	0	0	0	0	0	0	0	38	25.8	30.8	20 to 30	71.1	7	18.4
12/10/2025	13:00	0	0	0	13	4	0	0	0	0	0	0	0	0	0	0	0	0	0	0	0	17	28.4	31.2	25 to 35	100.0	4	23.5
12/10/2025	14:00	1	0	4	7	4	0	0	0	0	0	0	0	0	0	0	0	0	0	0	0	16	25.8	32.5	20 to 30	68.8	4	25.0
12/10/2025	15:00	3	1	4	8	5	1	0	0	0	0	0	0	0	0	0	0	0	0	0	0	22	25.4	33	25 to 35	59.1	6	27.3
12/10/2025	16:00	1	0	2	7	6	2	0	0	0	0	0	0	0	0	0	0	0	0	0	0	18	28.6	34.2	25 to 35	72.2	8	44.4
12/10/2025	17:00	0	0	3	9	7	1	0	0	0	0	0	0	0	0	0	0	0	0	0	0	20	28.7	33.6	25 to 35	80.0	8	40.0
12/10/2025	18:00	0	0	4	3	2	2	0	0	0	0	0	0	0	0	0	0	0	0	0	0	11	28.1	35	20 to 30	63.6	4	36.4
12/10/2025	19:00	0	0	1	0	2	0	0	0	0	0	0	0	0	0	0	0	0	0	0	0	3	28.7	35	25 to 35	66.7	2	66.7
12/10/2025	20:00	0	0	0	2	1	0	0	0	0	0	0	0	0	0	0	0	0	0	0	0	3	29	35	25 to 35	100.0	1	33.3
12/10/2025	21:00	0	0	0	2	1	0	0	0	0	0	0	0	0	0	0	0	0	0	0	0	3	28.7	35	25 to 35	100.0	1	33.3
12/10/2025	22:00	0	0	1	0	1	0	1	0	0	0	0	0	0	0	0	0	0	0	0	0	3	32	45	15 to 25	33.3	2	66.7
12/10/2025	23:00	0	0	0	0	1	0	1	0	0	0	0	0	0	0	0	0	0	0	0	0	2	37	45	25 to 35	50.0	2	100.0
24 Hr Summary		18	5	43	100	70	11	2	0	0	0	0	0	0	0	0	0	0	0	0	249	27	33.3	25 to 35	68.3	83	33.3	

Incoming Histogram

Broadmarston

from Wed-Oct-01-2025-12-00-AM to Sat-Oct-18-2025-10-59-AM

Date	Starting Hr:min	<15	15 to <20	20 to <25	25 to <30	30 to <35	35 to <40	40 to <45	45 to <50	50 to <55	55 to <60	60 to <65	65 to <70	70 to <75	75 to <80	80 to <85	85 to <90	90 to <95	95 to <100	100 to >105	Total Counts	Avg Speed (MPH)	85pet Speed	10MPH Pace	% in pace	# of Speeders	% Speeders	
13/10/2025	00:00	0	0	0	1	0	0	0	0	0	0	0	0	0	0	0	0	0	0	0	0	1	27	30	20 to 30	100.0	*	*
13/10/2025	01:00	0	0	0	0	0	0	0	0	0	0	0	0	0	0	0	0	0	0	0	0	0	0	0	*	*	*	*
13/10/2025	02:00	0	0	0	0	0	0	0	0	0	0	0	0	0	0	0	0	0	0	0	0	0	0	0	*	*	*	*
13/10/2025	03:00	0	0	0	0	0	0	0	0	0	0	0	0	0	0	0	0	0	0	0	0	0	0	0	*	*	*	*
13/10/2025	04:00	0	0	0	0	0	0	0	0	0	0	0	0	0	0	0	0	0	0	0	0	0	0	0	*	*	*	*
13/10/2025	05:00	0	0	1	0	1	0	0	0	0	0	0	0	0	0	0	0	0	0	0	0	2	27	35	15 to 25	50.0	1	50.0
13/10/2025	06:00	0	1	1	7	2	0	0	0	0	0	0	0	0	0	0	0	0	0	0	0	11	26.8	30	25 to 35	81.8	2	18.2
13/10/2025	07:00	0	0	2	10	8	3	0	0	0	0	0	0	0	0	0	0	0	0	0	0	23	29.8	35	25 to 35	78.3	11	47.8
13/10/2025	08:00	1	0	3	10	5	0	0	0	0	0	0	0	0	0	0	0	0	0	0	0	19	26.9	32	25 to 35	78.9	5	26.3
13/10/2025	09:00	2	3	6	7	2	1	0	0	0	0	0	0	0	0	0	0	0	0	0	0	21	23.9	30	20 to 30	61.9	3	14.3
13/10/2025	10:00	1	1	2	6	5	2	0	0	0	0	0	0	0	0	0	0	0	0	0	0	17	27.4	34	25 to 35	64.7	7	41.2
13/10/2025	11:00	1	1	4	9	3	2	0	0	0	0	0	0	0	0	0	0	0	0	0	0	20	26.7	33.3	20 to 30	65.0	5	25.0
13/10/2025	12:00	2	3	4	8	2	0	0	0	0	0	0	0	0	0	0	0	0	0	0	0	19	23.2	29.4	20 to 30	63.2	2	10.5
13/10/2025	13:00	0	1	2	8	7	2	0	0	0	0	0	0	0	0	0	0	0	0	0	0	20	28.9	34.3	25 to 35	75.0	9	45.0
13/10/2025	14:00	0	2	5	17	11	2	0	0	0	0	0	0	0	0	0	0	0	0	0	0	37	28.1	33.2	25 to 35	75.7	13	35.1
13/10/2025	15:00	0	0	5	16	4	1	0	0	0	0	0	0	0	0	0	0	0	0	0	0	26	27.4	31.2	20 to 30	80.8	5	19.2
13/10/2025	16:00	0	0	5	10	5	4	0	0	0	0	0	0	0	0	0	0	0	0	0	0	24	28.9	35	20 to 30	62.5	9	37.5
13/10/2025	17:00	1	1	6	8	1	0	0	0	0	0	0	0	0	0	0	0	0	0	0	0	17	24.3	28.8	20 to 30	82.4	1	5.9
13/10/2025	18:00	0	0	1	2	3	1	0	0	0	0	0	0	0	0	0	0	0	0	0	0	7	29.9	35	25 to 35	71.4	4	57.1
13/10/2025	19:00	0	0	2	3	2	0	0	0	0	0	0	0	0	0	0	0	0	0	0	0	7	27	32.5	20 to 30	71.4	2	28.6
13/10/2025	20:00	0	0	1	2	1	0	0	0	0	0	0	0	0	0	0	0	0	0	0	0	4	27	30	20 to 30	75.0	1	25.0
13/10/2025	21:00	0	0	1	1	5	2	0	0	0	0	0	0	0	0	0	0	0	0	0	0	9	31.6	37.5	30 to 40	77.8	7	77.8
13/10/2025	22:00	0	0	0	0	3	0	0	0	0	0	0	0	0	0	0	0	0	0	0	0	3	32.3	35	25 to 35	100.0	3	100.0
13/10/2025	23:00	0	0	0	0	0	0	0	0	0	0	0	0	0	0	0	0	0	0	0	0	0	0	0	*	*	*	*
24 Hr Summary		8	13	51	125	70	20	0	0	0	0	0	0	0	0	0	0	0	0	0	0	287	27.3	33.4	25 to 35	67.9	90	31.4

Incoming Histogram

Broadmarston

from Wed-Oct-01-2025-12-00-AM to Sat-Oct-18-2025-10-59-AM

Date	Starting Hr:min	<15	15 to <20	20 to <25	25 to <30	30 to <35	35 to <40	40 to <45	45 to <50	50 to <55	55 to <60	60 to <65	65 to <70	70 to <75	75 to <80	80 to <85	85 to <90	90 to <95	95 to <100	100 to >105	Total Counts	Avg Speed (MPH)	85pet Speed	10MPH Pace	% in pace	# of Speeders	% Speeders
14/10/2025	00:00	0	0	0	0	0	0	0	0	0	0	0	0	0	0	0	0	0	0	0	0	0	0	*	*	*	*
14/10/2025	01:00	0	0	0	0	0	0	0	0	0	0	0	0	0	0	0	0	0	0	0	0	0	0	*	*	*	*
14/10/2025	02:00	0	0	0	2	0	0	0	0	0	0	0	0	0	0	0	0	0	0	0	2	27.5	30	20 to 30	100.0	*	*
14/10/2025	03:00	0	0	1	0	0	0	0	0	0	0	0	0	0	0	0	0	0	0	0	1	22	25	15 to 25	100.0	*	*
14/10/2025	04:00	1	0	0	3	0	0	0	0	0	0	0	0	0	0	0	0	0	0	0	4	22.3	28.3	20 to 30	75.0	*	*
14/10/2025	05:00	0	1	1	3	0	0	0	0	0	0	0	0	0	0	0	0	0	0	0	5	24	28.3	20 to 30	80.0	*	*
14/10/2025	06:00	0	0	5	4	8	0	0	0	0	0	0	0	0	0	0	0	0	0	0	17	28.2	33.1	25 to 35	70.6	8	47.1
14/10/2025	07:00	0	2	4	11	8	1	0	0	0	0	0	0	0	0	0	0	0	0	0	26	27.6	33.1	25 to 35	73.1	9	34.6
14/10/2025	08:00	0	1	9	16	4	1	0	0	0	0	0	0	0	0	0	0	0	0	0	31	26.5	30	20 to 30	80.6	5	16.1
14/10/2025	09:00	1	0	4	14	2	0	0	0	0	0	0	0	0	0	0	0	0	0	0	21	26.1	29.6	20 to 30	85.7	2	9.5
14/10/2025	10:00	0	1	0	11	0	1	0	0	0	0	0	0	0	0	0	0	0	0	0	13	27.2	29.5	20 to 30	84.6	1	7.7
14/10/2025	11:00	2	4	6	10	4	1	0	0	0	0	0	0	0	0	0	0	0	0	0	27	24.4	31.2	20 to 30	59.3	5	18.5
14/10/2025	12:00	0	0	2	6	8	2	0	0	0	0	0	0	0	0	0	0	0	0	0	18	29.8	34.4	25 to 35	77.8	10	55.6
14/10/2025	13:00	1	2	8	6	6	2	2	0	0	0	0	0	0	0	0	0	0	0	0	27	27.3	35	20 to 30	51.9	10	37.0
14/10/2025	14:00	1	0	11	18	15	0	0	0	0	0	0	0	0	0	0	0	0	0	0	45	27.4	32.7	25 to 35	73.3	15	33.3
14/10/2025	15:00	0	1	7	15	7	2	0	0	0	0	0	0	0	0	0	0	0	0	0	32	27.5	32.9	20 to 30	68.8	9	28.1
14/10/2025	16:00	1	1	2	16	8	2	0	0	0	0	0	0	0	0	0	0	0	0	0	30	28.1	33.8	25 to 35	80.0	10	33.3
14/10/2025	17:00	0	0	3	8	6	1	0	0	0	0	0	0	0	0	0	0	0	0	0	18	28.6	33.3	25 to 35	77.8	7	38.9
14/10/2025	18:00	0	2	2	5	4	0	0	0	0	0	0	0	0	0	0	0	0	0	0	13	26.4	32.5	25 to 35	69.2	4	30.8
14/10/2025	19:00	0	0	1	3	3	1	1	0	0	0	0	0	0	0	0	0	0	0	0	9	31	40	25 to 35	66.7	5	55.6
14/10/2025	20:00	0	0	1	1	1	0	0	0	0	0	0	0	0	0	0	0	0	0	0	3	27	35	20 to 30	66.7	1	33.3
14/10/2025	21:00	0	0	0	2	3	0	0	0	0	0	0	0	0	0	0	0	0	0	0	5	30.2	33.3	25 to 35	100.0	3	60.0
14/10/2025	22:00	0	0	0	2	2	0	0	0	0	0	0	0	0	0	0	0	0	0	0	4	29.5	32.5	25 to 35	100.0	2	50.0
14/10/2025	23:00	0	0	0	0	0	0	0	0	0	0	0	0	0	0	0	0	0	0	0	0	0	0	*	*	*	*
24 Hr Summary		7	15	67	156	89	14	3	0	0	0	0	0	0	0	0	0	0	0	0	351	27.3	33	25 to 35	69.8	106	30.2

Incoming Histogram

Broadmarston

from Wed-Oct-01-2025-12-00-AM to Sat-Oct-18-2025-10-59-AM

Date	Starting Hr:min	<15	15 to <20	20 to <25	25 to <30	30 to <35	35 to <40	40 to <45	45 to <50	50 to <55	55 to <60	60 to <65	65 to <70	70 to <75	75 to <80	80 to <85	85 to <90	90 to <95	95 to <100	100 to >105	Total Counts	Avg Speed (MPH)	85pet Speed	10MPH Pace	% in pace	# of Speeders	% Speeders
15/10/2025	00:00	0	0	0	0	0	0	0	0	0	0	0	0	0	0	0	0	0	0	0	0	0	0	*	*	*	*
15/10/2025	01:00	0	0	0	0	0	0	0	0	0	0	0	0	0	0	0	0	0	0	0	0	0	0	*	*	*	*
15/10/2025	02:00	0	0	0	0	1	0	0	0	0	0	0	0	0	0	0	0	0	0	0	1	32	35	25 to 35	100.0	1	100.0
15/10/2025	03:00	0	0	0	0	0	1	0	0	0	0	0	0	0	0	0	0	0	0	0	1	37	40	30 to 40	100.0	1	100.0
15/10/2025	04:00	1	0	0	0	0	0	1	0	0	0	0	0	0	0	0	0	0	0	0	2	24.5	45	0 to 10	50.0	1	50.0
15/10/2025	05:00	0	0	0	2	2	0	0	0	0	0	0	0	0	0	0	0	0	0	0	4	29.5	32.5	25 to 35	100.0	2	50.0
15/10/2025	06:00	0	1	6	7	5	0	0	0	0	0	0	0	0	0	0	0	0	0	0	19	26.5	32	20 to 30	68.4	5	26.3
15/10/2025	07:00	1	0	3	20	4	1	0	0	0	0	0	0	0	0	0	0	0	0	0	29	27.3	31.2	25 to 35	82.8	5	17.2
15/10/2025	08:00	0	4	9	17	5	1	0	0	0	0	0	0	0	0	0	0	0	0	0	36	25.9	31	20 to 30	72.2	6	16.7
15/10/2025	09:00	6	1	0	5	2	0	1	0	0	0	0	0	0	0	0	0	0	0	0	15	20.8	32.5	25 to 35	46.7	3	20.0
15/10/2025	10:00	0	0	6	8	5	0	0	0	0	0	0	0	0	0	0	0	0	0	0	19	27	32	20 to 30	73.7	5	26.3
15/10/2025	11:00	6	3	4	13	2	0	1	0	0	0	0	0	0	0	0	0	0	0	0	29	23.2	29.6	20 to 30	58.6	3	10.3
15/10/2025	12:00	1	0	5	9	4	1	0	0	0	0	0	0	0	0	0	0	0	0	0	20	26.6	32.5	20 to 30	70.0	5	25.0
15/10/2025	13:00	2	3	9	11	8	0	0	0	0	0	0	0	0	0	0	0	0	0	0	33	25.2	31.9	20 to 30	60.6	8	24.2
15/10/2025	14:00	0	3	9	23	11	1	0	0	0	0	0	0	0	0	0	0	0	0	0	47	27.1	32.3	25 to 35	72.3	12	25.5
15/10/2025	15:00	0	1	9	14	7	2	1	0	0	0	0	0	0	0	0	0	0	0	0	34	27.6	33.6	20 to 30	67.6	10	29.4
15/10/2025	16:00	2	1	4	8	6	4	0	0	0	0	0	0	0	0	0	0	0	0	0	25	27.6	35	25 to 35	56.0	10	40.0
15/10/2025	17:00	0	1	9	9	7	1	0	0	0	0	0	0	0	0	0	0	0	0	0	27	26.9	32.9	20 to 30	66.7	8	29.6
15/10/2025	18:00	0	0	3	5	3	1	0	0	0	0	0	0	0	0	0	0	0	0	0	12	28	33.3	20 to 30	66.7	4	33.3
15/10/2025	19:00	0	0	0	3	0	0	0	0	0	0	0	0	0	0	0	0	0	0	0	3	27.3	30	20 to 30	100.0	*	*
15/10/2025	20:00	0	0	2	1	2	1	0	0	0	0	0	0	0	0	0	0	0	0	0	6	28.7	35	20 to 30	50.0	3	50.0
15/10/2025	21:00	0	0	3	2	3	0	0	0	0	0	0	0	0	0	0	0	0	0	0	8	27.3	33.3	20 to 30	62.5	3	37.5
15/10/2025	22:00	0	0	0	0	1	0	0	0	0	0	0	0	0	0	0	0	0	0	0	1	32	35	25 to 35	100.0	1	100.0
15/10/2025	23:00	0	0	0	0	0	0	0	0	0	0	0	0	0	0	0	0	0	0	0	0	0	0	*	*	*	*
24 Hr Summary		19	18	81	157	78	14	4	0	0	0	0	0	0	0	0	0	0	0	0	371	26.4	32.6	20 to 30	64.2	96	25.9

Incoming Histogram

Broadmarston

from Wed-Oct-01-2025-12-00-AM to Sat-Oct-18-2025-10-59-AM

Date	Starting Hr:min	<15	15 to <20	20 to <25	25 to <30	30 to <35	35 to <40	40 to <45	45 to <50	50 to <55	55 to <60	60 to <65	65 to <70	70 to <75	75 to <80	80 to <85	85 to <90	90 to <95	95 to <100	100 to >105	Total Counts	Avg Speed (MPH)	85pet Speed	10MPH Pace	% in pace	# of Speeders	% Speeders	
16/10/2025	00:00	0	0	0	1	0	0	0	0	0	0	0	0	0	0	0	0	0	0	0	0	1	27	30	20 to 30	100.0	*	*
16/10/2025	01:00	0	0	0	0	0	0	0	0	0	0	0	0	0	0	0	0	0	0	0	0	0	0	0	*	*	*	*
16/10/2025	02:00	0	0	0	1	0	0	0	0	0	0	0	0	0	0	0	0	0	0	0	0	1	27	30	20 to 30	100.0	*	*
16/10/2025	03:00	0	0	0	0	0	0	0	0	0	0	0	0	0	0	0	0	0	0	0	0	0	0	0	*	*	*	*
16/10/2025	04:00	0	0	0	0	1	0	0	0	0	0	0	0	0	0	0	0	0	0	0	0	1	32	35	25 to 35	100.0	1	100.0
16/10/2025	05:00	0	0	1	2	0	0	0	0	0	0	0	0	0	0	0	0	0	0	0	0	3	25.3	30	20 to 30	100.0	*	*
16/10/2025	06:00	0	1	3	0	3	1	0	0	0	0	0	0	0	0	0	0	0	0	0	0	8	27	35	15 to 25	50.0	4	50.0
16/10/2025	07:00	1	2	5	23	5	1	0	0	0	0	0	0	0	0	0	0	0	0	0	0	37	26.6	30	20 to 30	75.7	6	16.2
16/10/2025	08:00	1	1	3	8	8	2	0	0	0	0	0	0	0	0	0	0	0	0	0	0	23	27.9	34.4	25 to 35	69.6	10	43.5
16/10/2025	09:00	1	1	5	10	5	1	0	0	0	0	0	0	0	0	0	0	0	0	0	0	23	26.5	33	20 to 30	65.2	6	26.1
16/10/2025	10:00	0	2	3	11	4	1	0	0	0	0	0	0	0	0	0	0	0	0	0	0	21	26.9	32.5	25 to 35	71.4	5	23.8
16/10/2025	11:00	3	2	3	13	6	1	1	0	0	0	0	0	0	0	0	0	0	0	0	0	29	26.1	33.3	25 to 35	65.5	8	27.6
16/10/2025	12:00	2	3	4	14	4	0	0	0	0	0	0	0	0	0	0	0	0	0	0	0	27	25.1	30	20 to 30	66.7	4	14.8
16/10/2025	13:00	1	1	8	10	8	2	0	0	0	0	0	0	0	0	0	0	0	0	0	0	30	27	33.8	20 to 30	60.0	10	33.3
16/10/2025	14:00	1	0	8	14	10	2	0	0	0	0	0	0	0	0	0	0	0	0	0	0	35	27.7	33.5	25 to 35	68.6	12	34.3
16/10/2025	15:00	0	4	9	14	8	1	0	0	0	0	0	0	0	0	0	0	0	0	0	0	36	26.3	32.5	20 to 30	63.9	9	25.0
16/10/2025	16:00	0	2	5	14	8	3	0	0	0	0	0	0	0	0	0	0	0	0	0	0	32	28	33.8	25 to 35	68.8	11	34.4
16/10/2025	17:00	0	3	4	8	2	1	0	0	0	0	0	0	0	0	0	0	0	0	0	0	18	25.4	30	20 to 30	66.7	3	16.7
16/10/2025	18:00	0	0	1	3	0	0	0	0	0	0	0	0	0	0	0	0	0	0	0	0	4	25.8	28.3	20 to 30	100.0	*	*
16/10/2025	19:00	0	0	0	2	2	1	0	0	0	0	0	0	0	0	0	0	0	0	0	0	5	31	35	25 to 35	80.0	3	60.0
16/10/2025	20:00	0	0	0	1	3	1	0	0	0	0	0	0	0	0	0	0	0	0	0	0	5	32	35	25 to 35	80.0	4	80.0
16/10/2025	21:00	0	0	0	3	1	1	0	0	0	0	0	0	0	0	0	0	0	0	0	0	5	30	35	25 to 35	80.0	2	40.0
16/10/2025	22:00	0	0	0	0	0	0	0	0	0	0	0	0	0	0	0	0	0	0	0	0	0	0	0	*	*	*	*
16/10/2025	23:00	0	0	0	0	0	1	0	0	0	0	0	0	0	0	0	0	0	0	0	0	1	37	40	30 to 40	100.0	1	100.0
24 Hr Summary		10	22	62	152	78	20	1	0	0	0	0	0	0	0	0	0	0	0	0	0	345	27	33	25 to 35	66.7	99	28.7

Incoming Histogram

Broadmarston

from Wed-Oct-01-2025-12-00-AM to Sat-Oct-18-2025-10-59-AM

Date	Starting Hr:min	<15	15 to <20	20 to <25	25 to <30	30 to <35	35 to <40	40 to <45	45 to <50	50 to <55	55 to <60	60 to <65	65 to <70	70 to <75	75 to <80	80 to <85	85 to <90	90 to <95	95 to <100	100 to >105	Total Counts	Avg Speed (MPH)	85pet Speed	10MPH Pace	% in pace	# of Speeders	% Speeders
17/10/2025	00:00	0	0	0	0	0	0	0	0	0	0	0	0	0	0	0	0	0	0	0	0	0	0	*	*	*	*
17/10/2025	01:00	0	0	0	0	0	0	0	0	0	0	0	0	0	0	0	0	0	0	0	0	0	0	*	*	*	*
17/10/2025	02:00	0	0	0	0	1	0	0	0	0	0	0	0	0	0	0	0	0	0	0	1	32	35	25 to 35	100.0	1	100.0
17/10/2025	03:00	0	0	0	0	0	0	0	0	0	0	0	0	0	0	0	0	0	0	0	0	0	0	*	*	*	*
17/10/2025	04:00	0	0	1	0	0	0	0	0	0	0	0	0	0	0	0	0	0	0	0	1	22	25	15 to 25	100.0	*	*
17/10/2025	05:00	0	1	2	1	3	0	0	0	0	0	0	0	0	0	0	0	0	0	0	7	26.3	33.3	25 to 35	57.1	3	42.9
17/10/2025	06:00	0	0	5	8	2	1	0	0	0	0	0	0	0	0	0	0	0	0	0	16	26.9	32.5	20 to 30	81.3	3	18.8
17/10/2025	07:00	2	0	1	9	14	3	0	0	0	0	0	0	0	0	0	0	0	0	0	29	29.4	34.6	25 to 35	79.3	17	58.6
17/10/2025	08:00	2	2	6	10	9	1	0	0	0	0	0	0	0	0	0	0	0	0	0	30	26.4	33.3	25 to 35	63.3	10	33.3
17/10/2025	09:00	2	0	3	7	4	2	1	0	0	0	0	0	0	0	0	0	0	0	0	19	27.7	35	25 to 35	57.9	7	36.8
17/10/2025	10:00	3	0	2	13	4	0	0	0	0	0	0	0	0	0	0	0	0	0	0	22	25.7	31.2	25 to 35	77.3	4	18.2
17/10/2025	11:00	1	3	6	8	7	2	0	0	0	0	0	0	0	0	0	0	0	0	0	27	26.5	33.6	25 to 35	55.6	9	33.3
17/10/2025	12:00	1	0	2	12	5	0	0	0	0	0	0	0	0	0	0	0	0	0	0	20	27.1	32	25 to 35	85.0	5	25.0
17/10/2025	13:00	0	0	3	11	5	2	1	0	0	0	0	0	0	0	0	0	0	0	0	22	29.3	35	25 to 35	72.7	8	36.4
17/10/2025	14:00	2	3	7	19	7	2	0	0	0	0	0	0	0	0	0	0	0	0	0	40	26.3	32.1	20 to 30	65.0	9	22.5
17/10/2025	15:00	0	3	9	7	9	5	1	0	0	0	0	0	0	0	0	0	0	0	0	34	28.3	36	20 to 30	47.1	15	44.1
17/10/2025	16:00	0	0	6	14	6	0	0	0	0	0	0	0	0	0	0	0	0	0	0	26	27.3	31.7	20 to 30	76.9	6	23.1
17/10/2025	17:00	1	0	4	16	8	1	1	0	0	0	0	0	0	0	0	0	0	0	0	31	28.3	33.1	25 to 35	77.4	10	32.3
17/10/2025	18:00	0	0	2	6	4	1	0	0	0	0	0	0	0	0	0	0	0	0	0	13	28.7	33.8	25 to 35	76.9	5	38.5
17/10/2025	19:00	1	1	1	2	1	2	0	0	0	0	0	0	0	0	0	0	0	0	0	8	25.8	37.5	20 to 30	37.5	3	37.5
17/10/2025	20:00	0	0	2	2	1	0	0	0	0	0	0	0	0	0	0	0	0	0	0	5	26.2	30	20 to 30	80.0	1	20.0
17/10/2025	21:00	0	0	0	1	2	2	0	0	0	0	0	0	0	0	0	0	0	0	0	5	33	37.5	30 to 40	80.0	4	80.0
17/10/2025	22:00	0	0	0	1	1	0	0	0	0	0	0	0	0	0	0	0	0	0	0	2	29.5	35	25 to 35	100.0	1	50.0
17/10/2025	23:00	0	0	0	0	0	0	0	0	0	0	0	0	0	0	0	0	0	0	0	0	0	0	*	*	*	*
24 Hr Summary		15	13	62	147	93	24	4	0	0	0	0	0	0	0	0	0	0	0	0	358	27.5	33.6	25 to 35	67.0	121	33.8

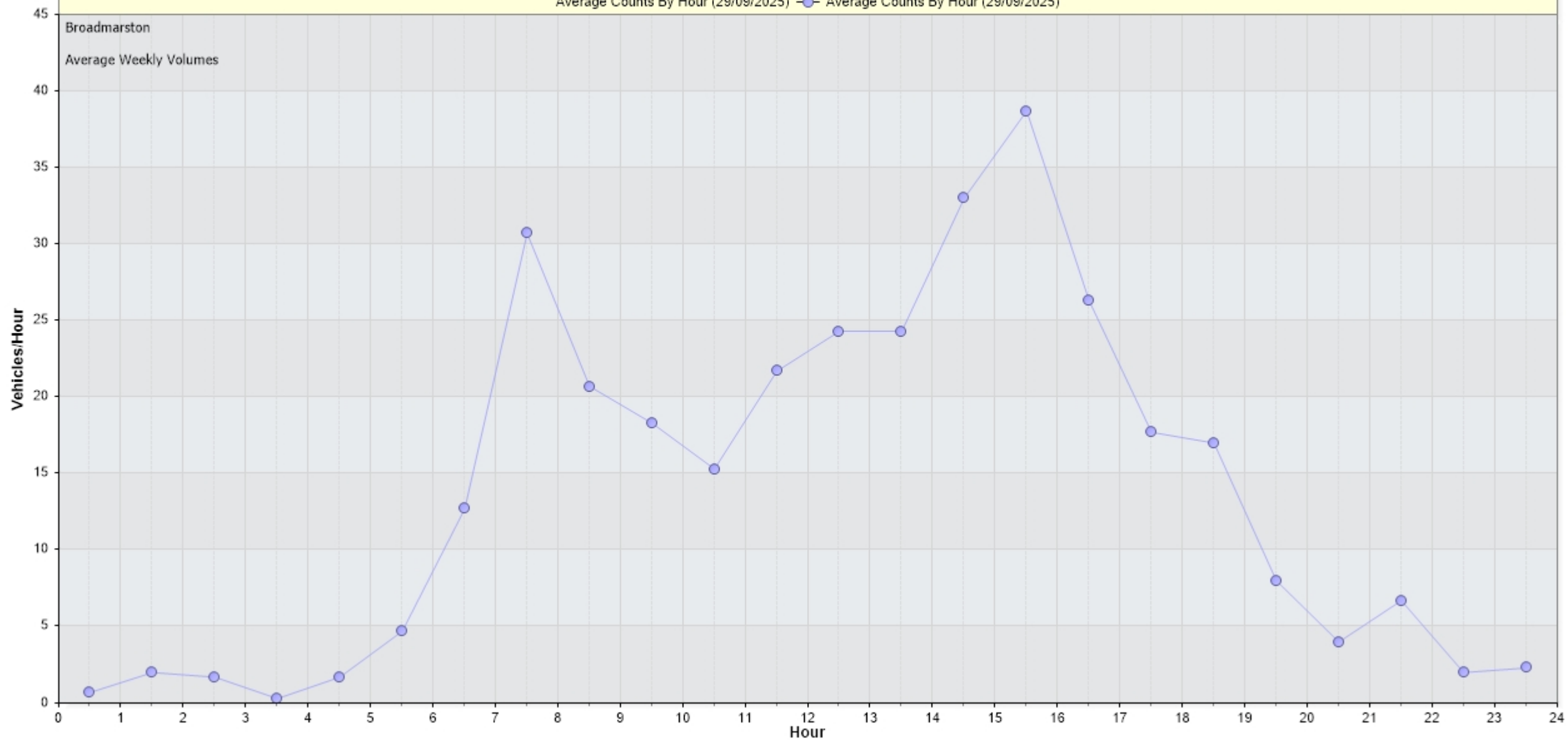
Incoming Histogram

Broadmarston

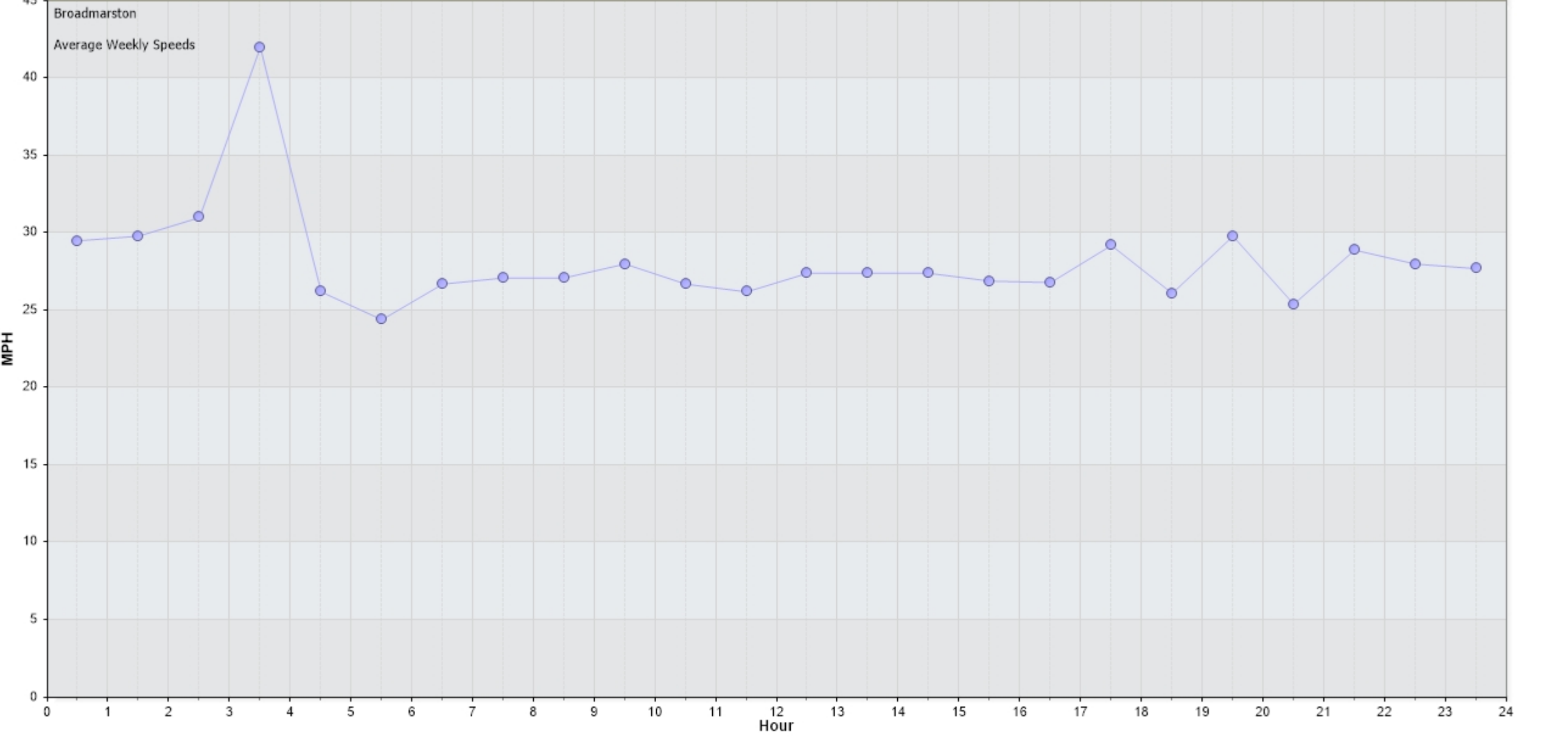
from Wed-Oct-01-2025-12-00-AM to Sat-Oct-18-2025-10-59-AM

Date	Starting Hr:min	<15	15 to <20	20 to <25	25 to <30	30 to <35	35 to <40	40 to <45	45 to <50	50 to <55	55 to <60	60 to <65	65 to <70	70 to <75	75 to <80	80 to <85	85 to <90	90 to <95	95 to <100	100 to >105	Total Counts	Avg Speed (MPH)	85pet Speed	10MPH Pace	% in pace	# of Speeders	% Speeders	
18/10/2025	00:00	0	0	0	0	0	0	0	0	0	0	0	0	0	0	0	0	0	0	0	0	0	0	*	*	*	*	
18/10/2025	01:00	0	0	0	0	1	0	0	0	0	0	0	0	0	0	0	0	0	0	0	0	1	32	35	25 to 35	100.0	1	100.0
18/10/2025	02:00	0	0	0	0	1	0	0	0	0	0	0	0	0	0	0	0	0	0	0	0	1	32	35	25 to 35	100.0	1	100.0
18/10/2025	03:00	0	0	0	1	0	0	0	0	0	0	0	0	0	0	0	0	0	0	0	0	1	27	30	20 to 30	100.0	*	*
18/10/2025	04:00	0	0	0	0	0	0	0	0	0	0	0	0	0	0	0	0	0	0	0	0	0	0	0	*	*	*	*
18/10/2025	05:00	0	0	0	0	0	0	0	0	0	0	0	0	0	0	0	0	0	0	0	0	0	0	0	*	*	*	*
18/10/2025	06:00	0	0	0	4	3	0	0	0	0	0	0	0	0	0	0	0	0	0	0	0	7	29.1	33.3	25 to 35	100.0	3	42.9
18/10/2025	07:00	0	0	4	4	1	2	0	0	0	0	0	0	0	0	0	0	0	0	0	0	11	27.6	35	20 to 30	72.7	3	27.3
18/10/2025	08:00	1	0	5	7	3	0	0	0	0	0	0	0	0	0	0	0	0	0	0	0	16	25.5	31.7	20 to 30	75.0	3	18.8
18/10/2025	09:00	0	1	4	8	3	2	0	0	0	0	0	0	0	0	0	0	0	0	0	0	18	27.5	33.3	20 to 30	66.7	5	27.8
18/10/2025	10:00	1	1	1	2	1	1	0	0	0	0	0	0	0	0	0	0	0	0	0	0	7	24.1	35	20 to 30	42.9	2	28.6
18/10/2025	11:00	*	*	*	*	*	*	*	*	*	*	*	*	*	*	*	*	*	*	*	*	*	*	*	*	*	*	*
18/10/2025	12:00	*	*	*	*	*	*	*	*	*	*	*	*	*	*	*	*	*	*	*	*	*	*	*	*	*	*	*
18/10/2025	13:00	*	*	*	*	*	*	*	*	*	*	*	*	*	*	*	*	*	*	*	*	*	*	*	*	*	*	*
18/10/2025	14:00	*	*	*	*	*	*	*	*	*	*	*	*	*	*	*	*	*	*	*	*	*	*	*	*	*	*	*
18/10/2025	15:00	*	*	*	*	*	*	*	*	*	*	*	*	*	*	*	*	*	*	*	*	*	*	*	*	*	*	*
18/10/2025	16:00	*	*	*	*	*	*	*	*	*	*	*	*	*	*	*	*	*	*	*	*	*	*	*	*	*	*	*
18/10/2025	17:00	*	*	*	*	*	*	*	*	*	*	*	*	*	*	*	*	*	*	*	*	*	*	*	*	*	*	*
18/10/2025	18:00	*	*	*	*	*	*	*	*	*	*	*	*	*	*	*	*	*	*	*	*	*	*	*	*	*	*	*
18/10/2025	19:00	*	*	*	*	*	*	*	*	*	*	*	*	*	*	*	*	*	*	*	*	*	*	*	*	*	*	*
18/10/2025	20:00	*	*	*	*	*	*	*	*	*	*	*	*	*	*	*	*	*	*	*	*	*	*	*	*	*	*	*
18/10/2025	21:00	*	*	*	*	*	*	*	*	*	*	*	*	*	*	*	*	*	*	*	*	*	*	*	*	*	*	*
18/10/2025	22:00	*	*	*	*	*	*	*	*	*	*	*	*	*	*	*	*	*	*	*	*	*	*	*	*	*	*	*
18/10/2025	23:00	*	*	*	*	*	*	*	*	*	*	*	*	*	*	*	*	*	*	*	*	*	*	*	*	*	*	*
24 Hr Summary		2	2	14	26	13	5	0	0	0	0	0	0	0	0	0	0	0	0	0	0	62	27	33.5	20 to 30	64.5	18	29.0

Incoming:Average Hourly Volume for Week of 29/09/2025
Average Counts By Hour (29/09/2025) — Average Counts By Hour (29/09/2025)



Incoming:Average Hourly WEEKDAY Speeds for Week of 29/09/2025
Average Hourly WEEKDAY Speeds By Hour (29/09/2025) — Average Hourly WEEKDAY Speeds By Hour (29/09/2025)

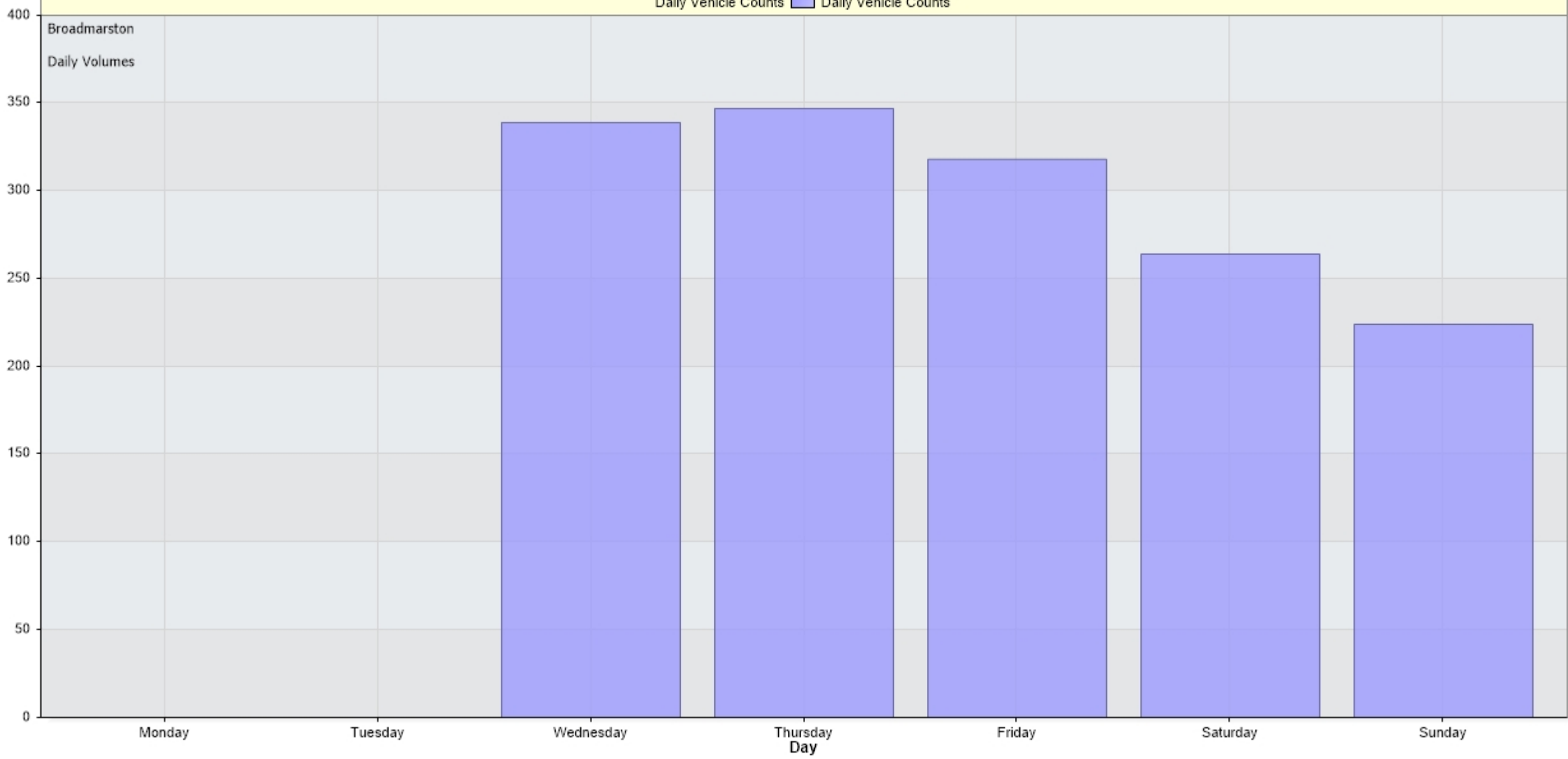


Incoming: Daily Volume for Week of 29/09/2025

Daily Vehicle Counts



Daily Vehicle Counts



Broadmarston

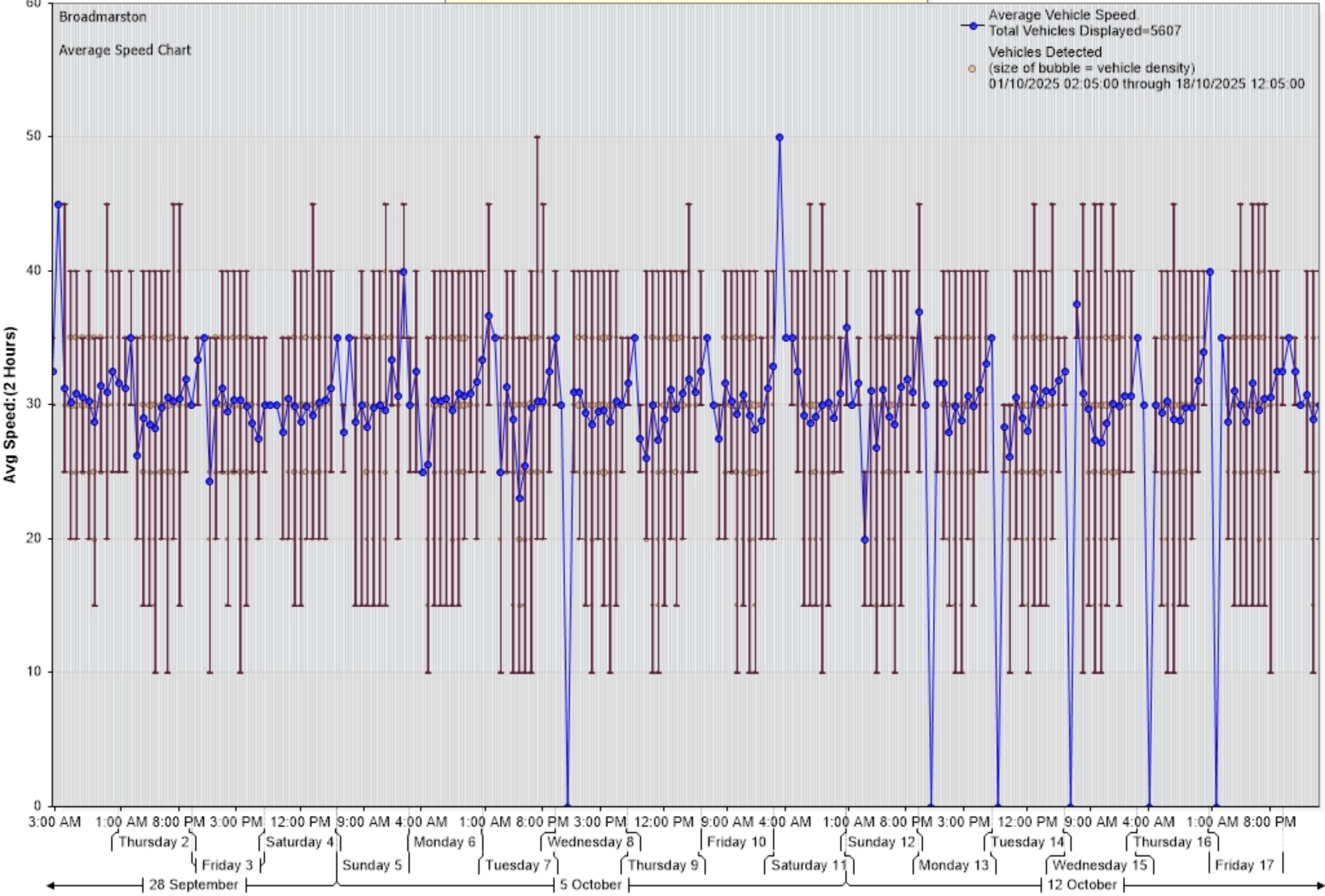
Daily Volumes

Vehicles

Day

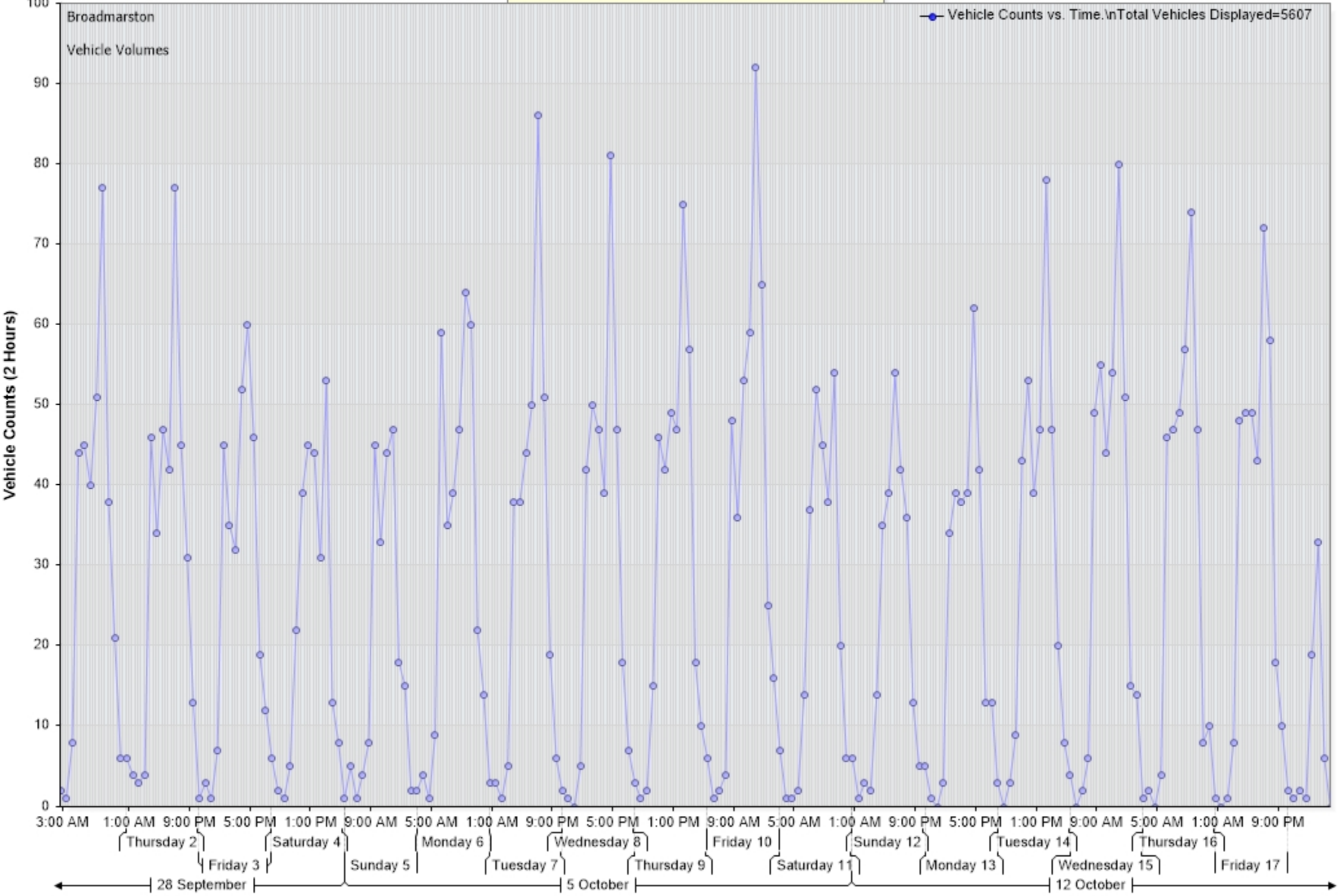
Zoom help

Average Vehicle Speed (MPH) vs. Time [Broadmarston:Incoming]



Zoom help

Vehicle Counts vs. Time [Broadmarston: Incoming]



Vehicle Counts Vs. Speed [Broadmarston: Incoming]

Broadmarston

Volume By Speed Histogram

5,607 Counts

Vehicle Counts

3,000
2,500
2,000
1,500
1,000
500
0

5 10 15 20 25 30 35 40 45 50

Vehicle Speed (MPH)



Percentile Counts Vs. Speed for [Broadmarston: Incoming]

Broadmarston
85th Pct Speed=33.0 MPH
Vehicles in data=5607
01/10/2025 00:00:00 to 18/10/2025 10:59:59

